



METABOX

The Versatile Metal Drawer System

blum.com

 **blum**[®]

Endless Possibilities

With METABOX, Blum offers an economical steel drawer for different application options in the kitchen, bathroom and office.

blum





Contents

METABOX

4	METABOX drawer system
5	Testing standards
6	General specifications
8	320N drawer series
10	320M drawer series
12	320K drawer series
14	320H drawer series
16	Gallery rail
19	Interior roll-out application
22	BLUMOTION for METABOX
24	File drawer application
27	Assembly aids
33	Accessories
36	Drawer front overlay charts
39	Part Number Index

Virtually unlimited storage solutions

The METABOX drawer program has a wide range of heights, lengths and optional accessories available. Within this comprehensive system, everything stored is easy to access and even small or bulky items are handled with ease.

METABOX's design complements the style of frameless cabinetry that has gained popularity because of its effective use of cabinet interior space. Since it is fully compatible with the 32 mm cabinet construction system, the METABOX program makes installation quick and precise.

METABOX is a great solution for kitchens, baths, office, healthcare and commercial applications.



Features & benefits

- Application possibilities
- Contemporary design
- Three-dimensional front adjustment
- Easy cam height adjustment
- Simple insertion and removal
- With BLUMATIC self-closing feature
- BLUMOTION soft closing option available

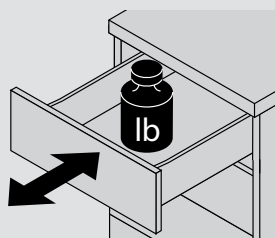


Testing standards

Blum, Inc. is ISO 9001 certified which means that you are assured of consistent quality in every Blum product. All Blum runners must pass these tests without showing a measurable reduction in performance or deviation in adjustment position. Testing standards vary between products and applications.

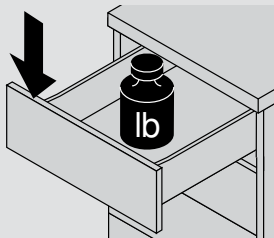
All Blum runners meet or exceed ANSI/BHMA 156.9 grade 1 requirements. Contact your local Blum representative for more details.

Dynamic wear test



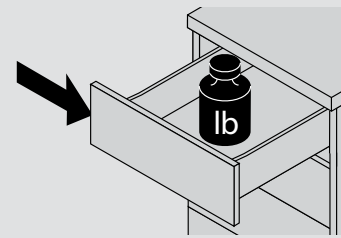
100,000 open/close cycles with a total load of 75 lb on a 550 mm drawer.

Static load test



10 times for 10 seconds each time when completely extended, 66 lb is applied to the corner of the drawer front of a fully loaded drawer.

Side pressure test



10 times for 10 seconds each time when completely extended, 33 lb is applied to the side of the drawer front of a fully loaded drawer.



General information

All Blum hardware undergoes strict quality control procedures through all stages of production. Blum hardware is designed for cabinets and cabinet components made from wood, melamine or MDF. Careful attention must be paid to installation and operating instructions when using Blum hardware (see catalogs and instruction sheets for all technical information). The manufacturer must decide on the screws or attachment methods to suit the material being used (i.e. wood, melamine, etc.). The hardware must not be exposed to acidic or corrosive materials (i.e. some household cleaning solutions). To ensure that Blum hardware functions correctly, it must be kept clean and undamaged. For any additional information please contact your Blum representative. Anyone selling Blum hardware must ensure that their customer is aware of any relevant information given in this catalog.

Conditions of sale and delivery

All deliveries and services are based on the "general conditions of sale" which are available upon request. The technical presentations and dimensions in illustrations are non-binding. We reserve the right to make changes to specifications at any time. We do not accept any responsibility for any errors which may occur in the production of this catalog.

Cabinet types and capacity

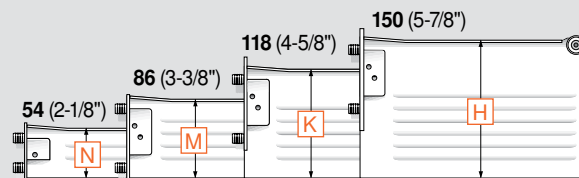
The METABOX drawer system can be installed in either frameless or face frame constructed cabinets with optional rear mounting sockets.

METABOX drawers have a static load capacity of 100 lb and a dynamic capacity of 75 lb and are tested to perform 100,000 open/close cycles without failure.

METABOX drawers install in all cabinets

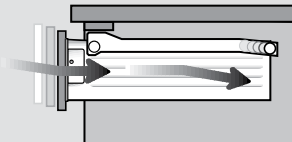


Available heights

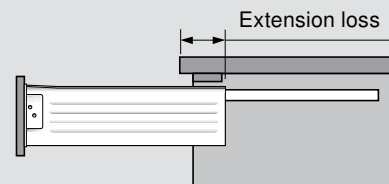


METABOX is available in white in four drawer heights, offering a multitude of design options.

Opening and closing information



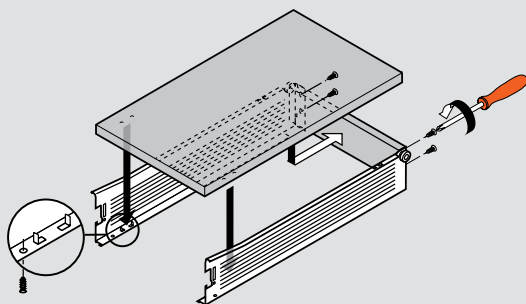
BLUMATIC self-closing action results from the angled drawer and cabinet profiles.



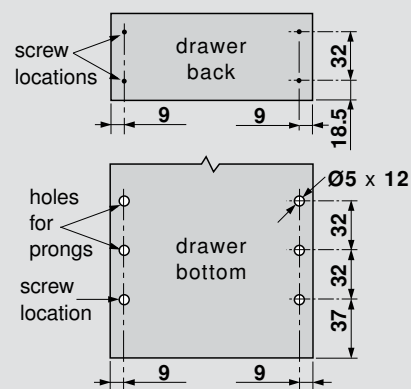
320 series 3/4 extension drawers have an extension loss when fully opened.

Drawer back and bottom preparation

METABOX "C15" version



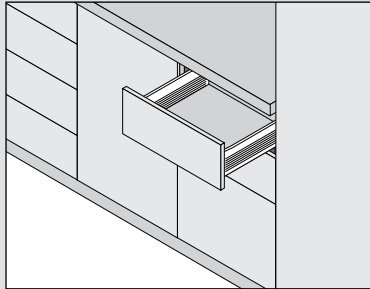
METABOX "C15" drawers can be assembled with the aid of the Universal boring template (page 29).



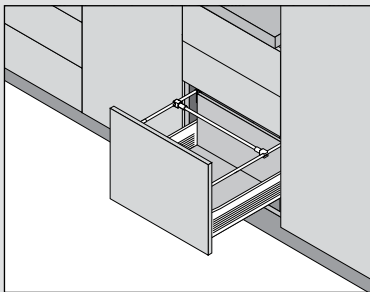
Boring for C15 drawer back and bottom
(for 13 (1/2") material, holes are 10 (3/8") deep)

Drawer configurations

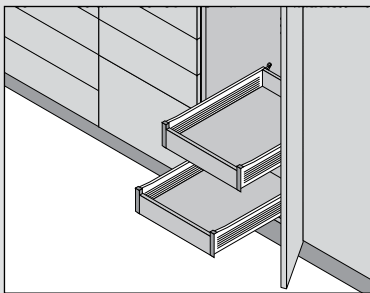
Standard drawer



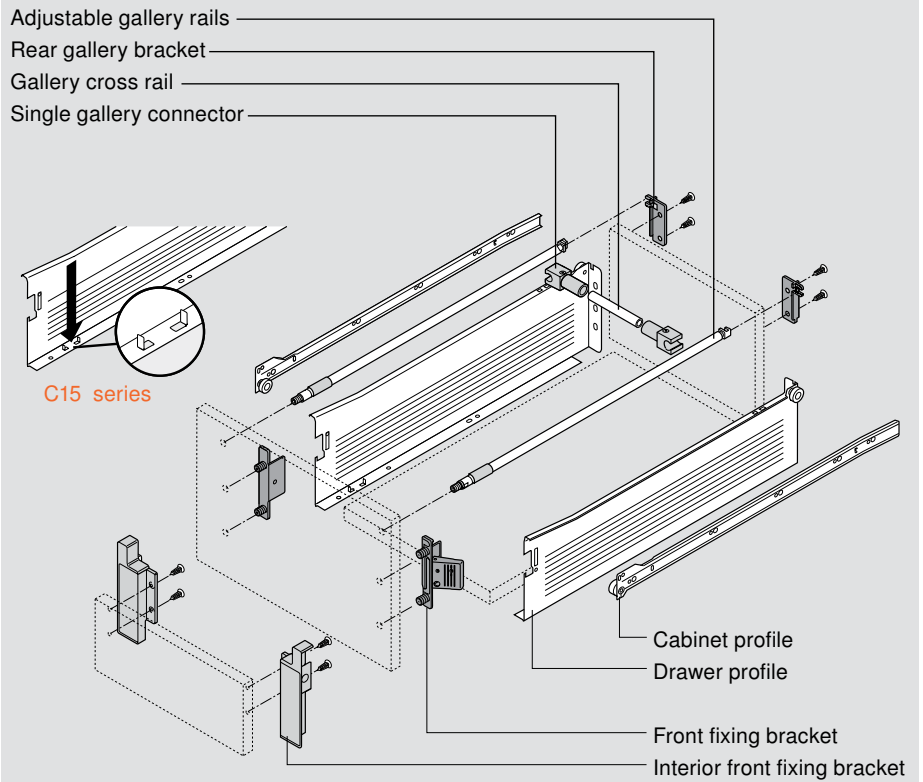
Standard drawer with gallery organization



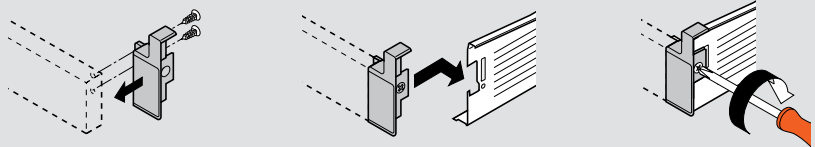
Interior roll-out trays



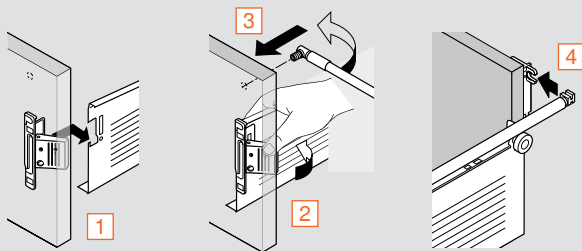
Components and accessories



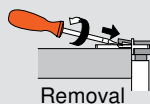
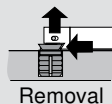
Interior drawer front assembly



Drawer front assembly

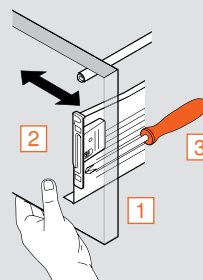


- 1 Insert front bracket
- 2 Snap closed
- 3 Insert gallery
- 4 Snap gallery back



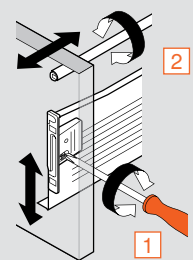
Drawer front adjustment

Side adjustment



- 1 Loosen fixing screws
- 2 Adjust front
- 3 Tighten screws

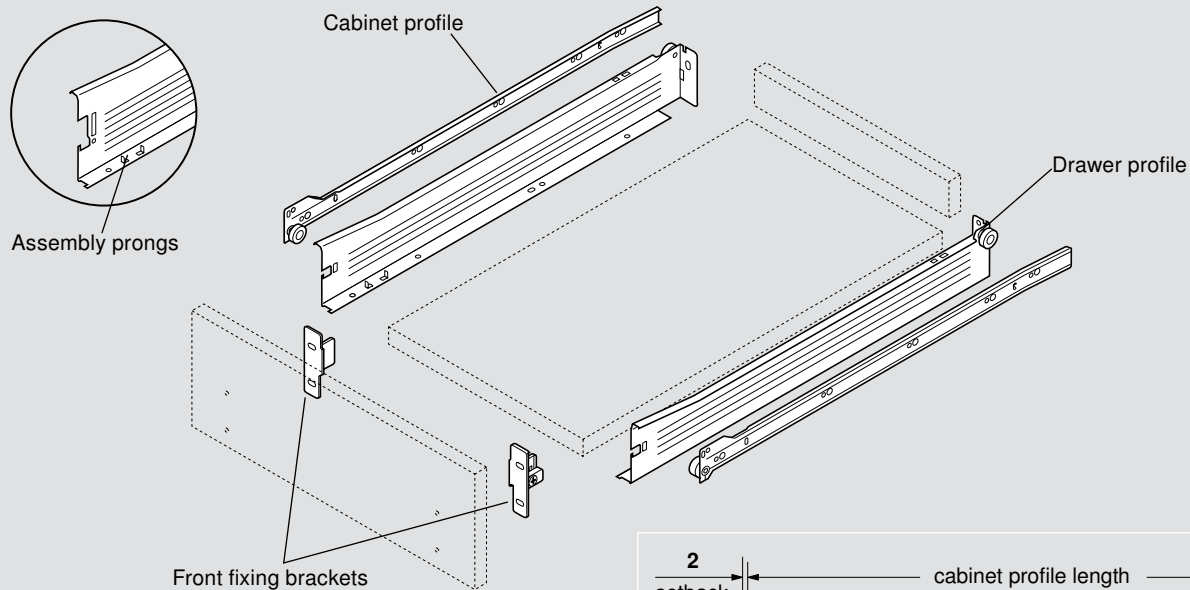
Height and tilt adjustment



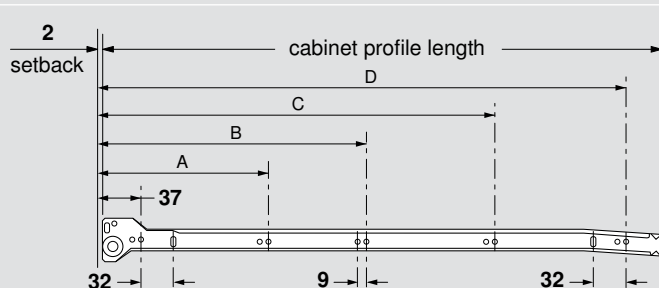
- 1 Adjust height cam
- 2 Turn rail to adjust tilt

Components

C15 series



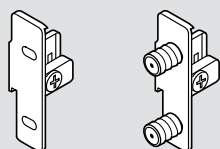
NOTE: Add-on BLUMOTION see page 22



Runner sets (includes cabinet and drawer profiles)

C15 series white	Nominal Length	Min. inside cabinet depth	Nominal length	System screw mounting hole positions			
				A	B	C	D
320N5500C15	22"	557 (21-7/8")	550 (21-5/8")	165	261	389	517
320N5000C15	20"	507 (19-15/16")	500 (19-11/16")	165	261	389	453
320N4500C15	18"	457 (17-15/16")	450 (17-11/16")	165	261	389	—
320N4000C15	16"	407 (16")	400 (15-3/4")	165	261	357	—
320N3500C15	14"	357 (14")	350 (13-3/4")	165	261	325	—

Standard front fixing bracket



Nickel-plated steel

Part no.



Screw-on

Right

ZSF.1510.04

Left

ZSF.1510.05



Press-in

Right

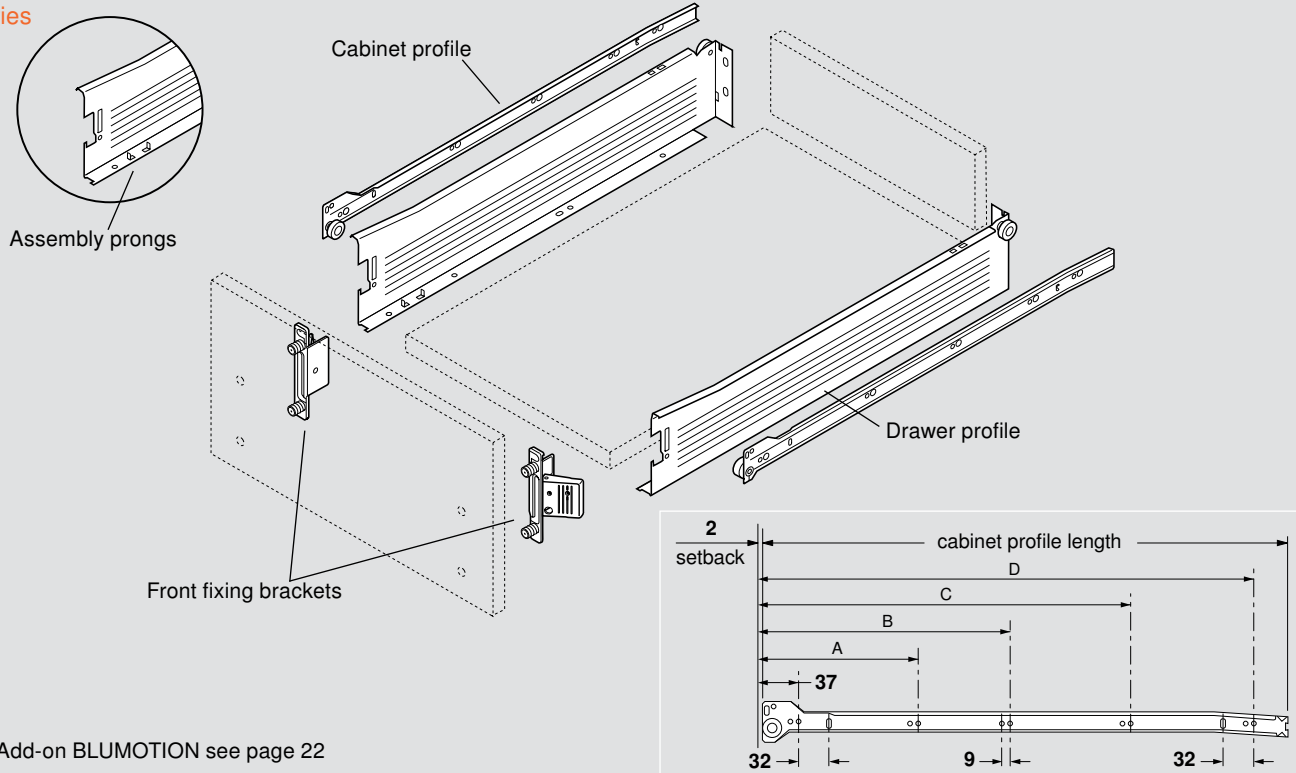
ZSF.1610.04

Left

ZSF.1610.05

Components

C15 series



Runner sets (includes cabinet and drawer profiles)

C15 series white	Nominal Length	Min. inside cabinet depth	Nominal length	System screw mounting hole positions			
				A	B	C	D
320M5500C15	22"	557 (21-7/8")	550 (21-5/8")	165	261	389	517
320M5000C15	20"	507 (19-15/16")	500 (19-11/16")	165	261	389	453
320M4500C15	18"	457 (17-15/16")	450 (17-11/16")	165	261	389	—
320M4000C15	16"	407 (16")	400 (15-3/4")	165	261	357	—
320M3500C15	14"	357 (14")	350 (13-3/4")	165	261	325	—
320M2700C15	11"	277 (10-7/8")	270 (10-5/8")	229	—	—	—

Standard front fixing bracket

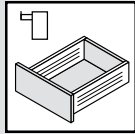
	Nickel-plated steel		
	Part no.		
		Right	ZSF.1700 R
		Left	ZSF.1700 L
		Right	ZSF.1800 R
		Left	ZSF.1800 L

CLIP front fixing bracket

	Nickel-plated steel		
		Right	ZSF.1200 R
		Left	ZSF.1200 L
		Right	ZSF.1300 R
		Left	ZSF.1300 L
	EXPANDO	Right	ZSF.130E R
		Left	ZSF.130E L

Standard cover cap

Nylon white		NOTE: Blum logo cover caps available
		ZAA.3500

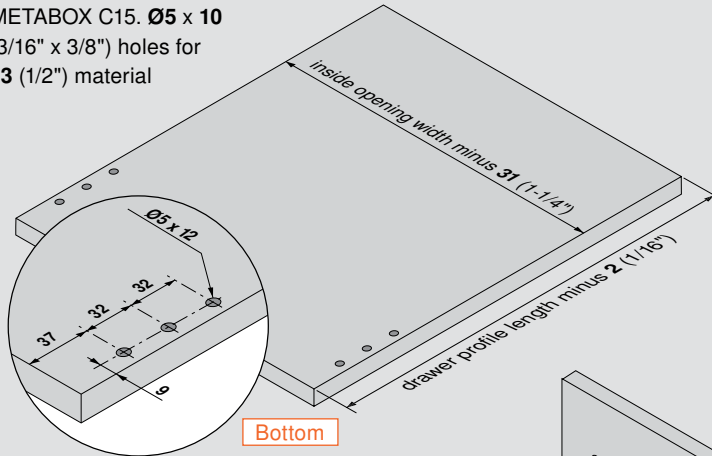


320M Drawer Series

METABOX

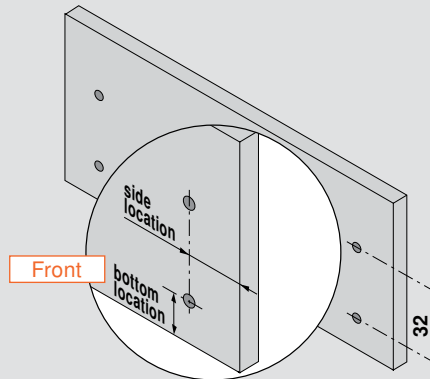
Specifications

Pre-bore holes for use with
METABOX C15. $\varnothing 5 \times 10$
(3/16" x 3/8") holes for
13 (1/2") material

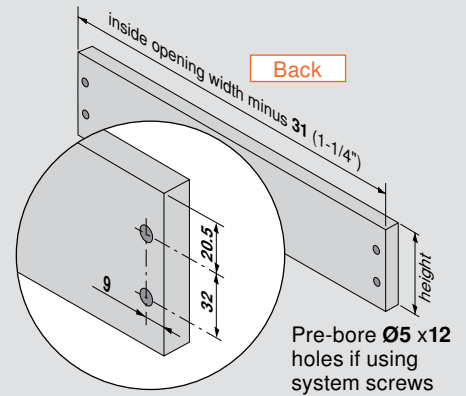


Bottom

Nominal length	Bottom length
550 (21-5/8")	548 (21-9/16")
500 (19-11/16")	498 (19-5/8")
450 (17-11/16")	448 (17-5/8")
400 (15-3/4")	398 (15-11/16")
350 (13-3/4")	348 (13-11/16")
270 (10-5/8")	268 (10-9/16")



Front



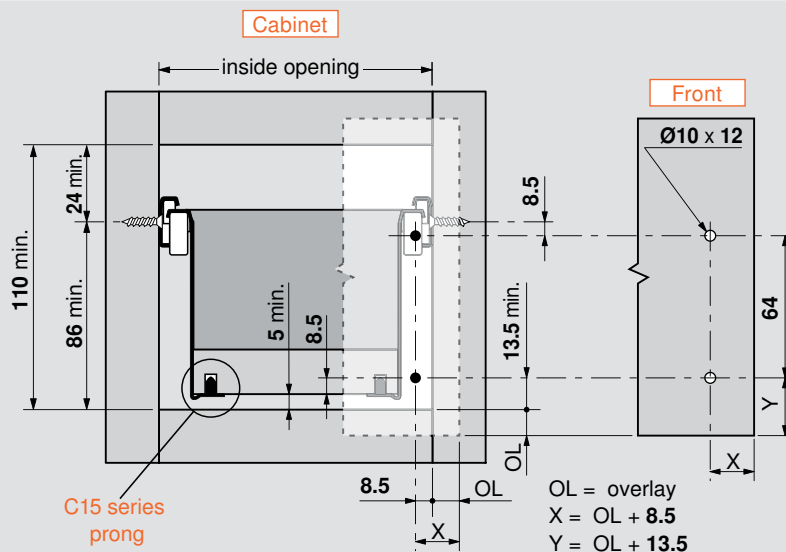
Back

Pre-bore $\varnothing 5 \times 12$
holes if using
system screws

Material thickness	Back height
13 (1/2")	74 (2-15/16")
16 (5/8")	71 (2-13/16")
19 (3/4")	68 (2-11/16")

Bore $\varnothing 10 \times 12$ ($\varnothing 3/8" \times 1/2"$) hole for front fixing brackets with dowels
(Determine locations from specifications below, or see page 42 for pre-determined overlays)

Installation specifications

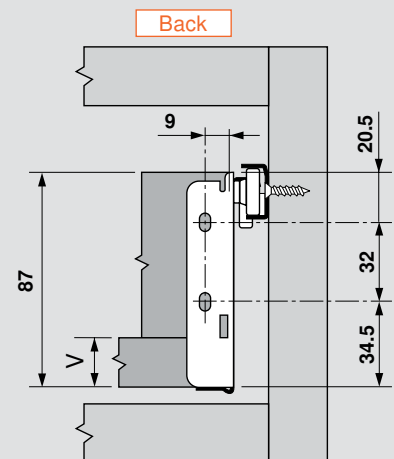


Cabinet

Front

C15 series
prong

OL = overlay
X = OL + 8.5
Y = OL + 13.5



Back

V = variable bottom thickness minimum

Rear bracket for frame cabinet applications

For gallery rail specifications

For interior drawer specifications

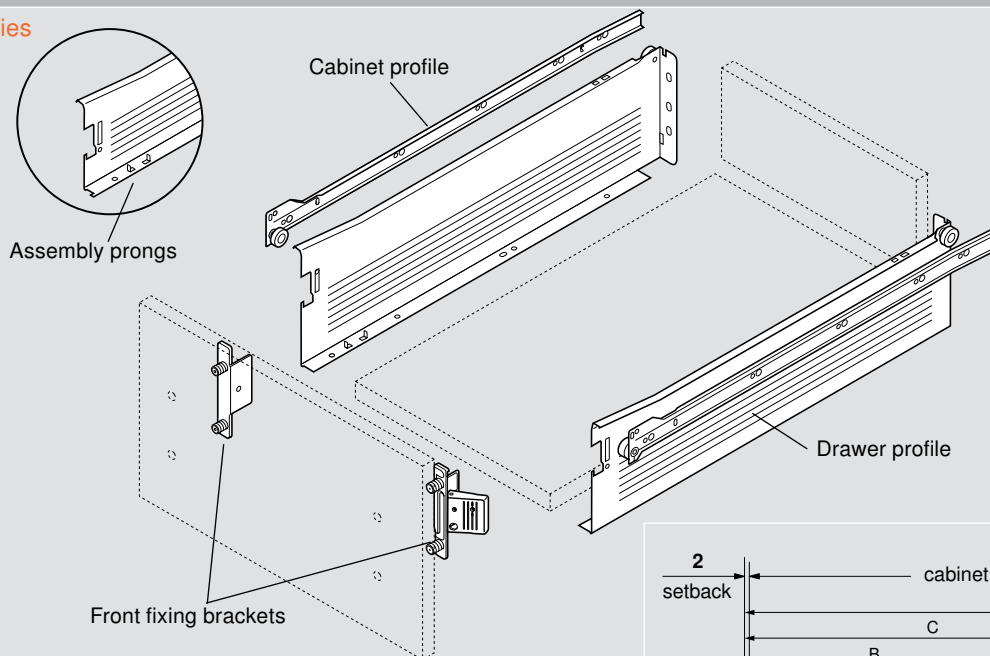
page 35

page 16

page 20

Components

C15 series



NOTE: Add-on BLUMOTION see page 22

Runner sets (includes cabinet and drawer profiles)

C15 series white	Nominal Length	Min. inside cabinet depth	Nominal length	System screw mounting hole positions			
				A	B	C	D
320K5500C15	22"	557 (21-7/8")	550 (21-5/8")	165	261	389	517
320K5000C15	20"	507 (19-15/16")	500 (19-11/16")	165	261	389	453
320K4500C15	18"	457 (17-15/16")	450 (17-11/16")	165	261	389	—
320K4000C15	16"	407 (16")	400 (15-3/4")	165	261	357	—
320K3500C15	14"	357 (14")	350 (13-3/4")	165	261	325	—

Standard front fixing bracket

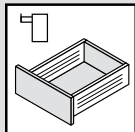
	Nickel-plated steel		
	Part no.		
		Right	ZSF.1700 R
		Left	ZSF.1700 L
		Right	ZSF.1800 R
		Left	ZSF.1800 L

CLIP front fixing bracket

	Nickel-plated steel		
		Right	ZSF.1200 R
		Left	ZSF.1200 L
		Right	ZSF.1300 R
		Left	ZSF.1300 L
	EXPANDO	Right	ZSF.130E R
		Left	ZSF.130E L

Standard cover cap

Nylon white		NOTE: Blum logo cover caps available
		ZAA.3500

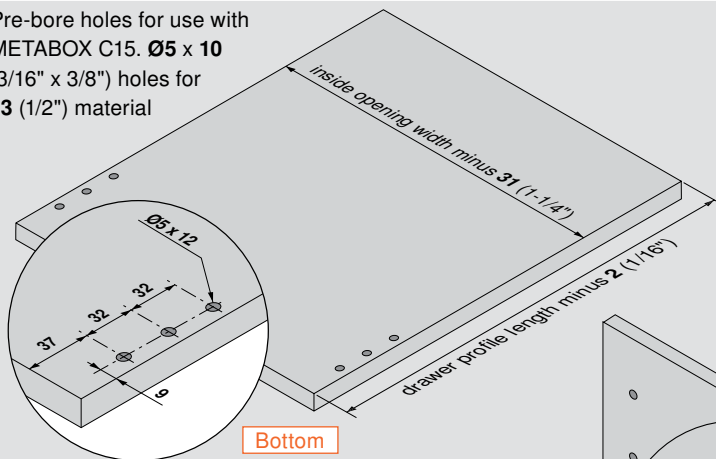


320K Drawer Series

METABOX

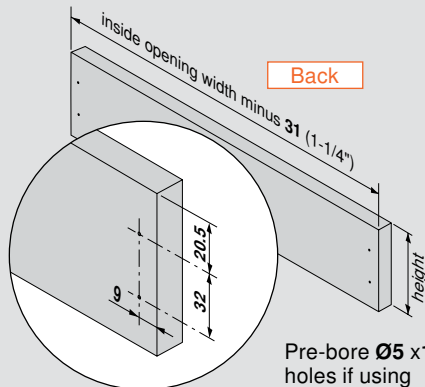
Specifications

Pre-bore holes for use with
METABOX C15. $\varnothing 5 \times 10$
(3/16" x 3/8") holes for
13 (1/2") material



Bottom

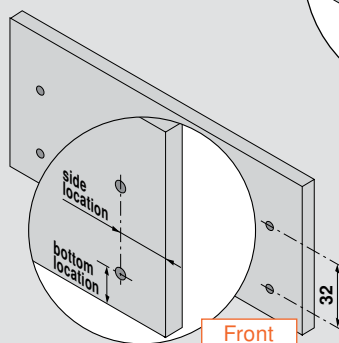
Nominal length	Bottom length
550 (21-5/8")	548 (21-9/16")
500 (19-11/16")	498 (19-5/8")
450 (17-11/16")	448 (17-5/8")
400 (15-3/4")	398 (15-11/16")
350 (13-3/4")	348 (13-11/16")



Back

Pre-bore $\varnothing 5 \times 12$
holes if using
system screws

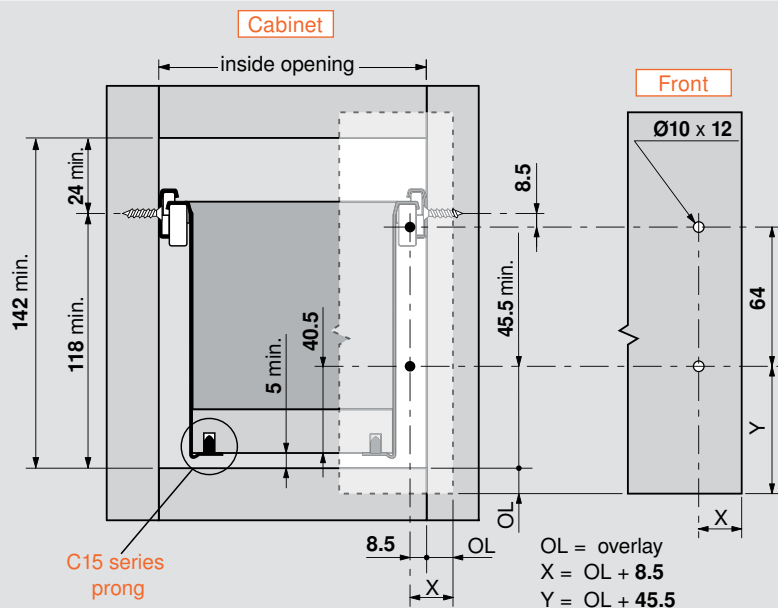
Material thickness	Back height
13 (1/2")	106 (4-3/16")
16 (5/8")	103 (4-1/16")
19 (3/4")	100 (3-15/16")



Front

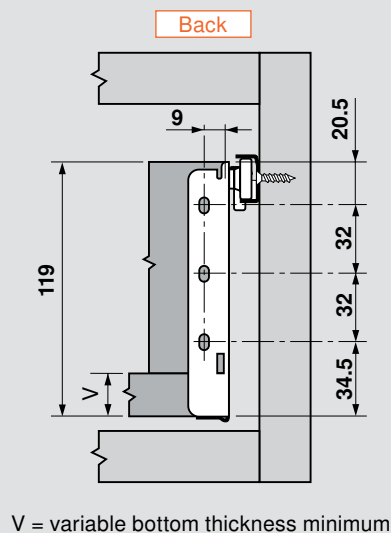
Bore $\varnothing 10 \times 12$ ($\varnothing 3/8" \times 1/2"$) hole for front fixing brackets with dowels
(Determine locations from specifications below, or see page 42 for pre-determined overlays)

Installation specifications



C15 series
prong

OL = overlay
X = OL + 8.5
Y = OL + 45.5



V = variable bottom thickness minimum

Rear bracket for frame cabinet applications

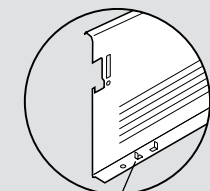
page 35

For gallery rail specifications

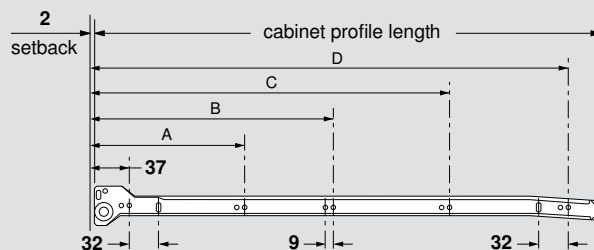
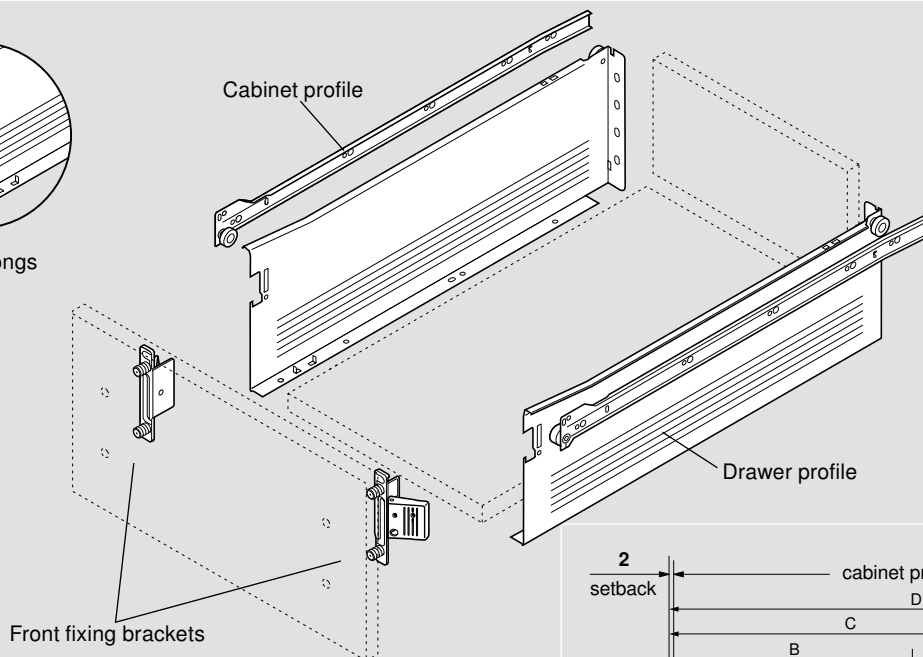
page 16

Components

C15 series



Assembly prongs



NOTE: Add-on BLUMOTION see page 22

Runner sets (includes cabinet and drawer profiles)

C15 series white	Nominal Length	Min. inside cabinet depth	Nominal length	System screw mounting hole positions			
				A	B	C	D
320H5500C15	22"	557 (21-7/8")	550 (21-5/8")	165	261	389	517
320H5000C15	20"	507 (19-15/16")	500 (19-11/16")	165	261	389	453
320H4500C15	18"	457 (17-15/16")	450 (17-11/16")	165	261	389	—
320H4000C15	16"	407 (16")	400 (15-3/4")	165	261	357	—
320H3500C15	14"	357 (14")	350 (13-3/4")	165	261	325	—

Standard front fixing bracket

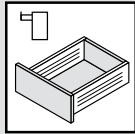
Nickel-plated steel			
	Part no.		
		Right	ZSF.1700 R
		Left	ZSF.1700 L
		Right	ZSF.1800 R
		Left	ZSF.1800 L

CLIP front fixing bracket

Nickel-plated steel			
		Right	ZSF.1200 R
		Left	ZSF.1200 L
		Right	ZSF.1300 R
		Left	ZSF.1300 L
	EXPANDO	Right	ZSF.130E R
		Left	ZSF.130E L

Standard cover cap

Nylon white		NOTE: Blum logo cover caps available
		ZAA.3500

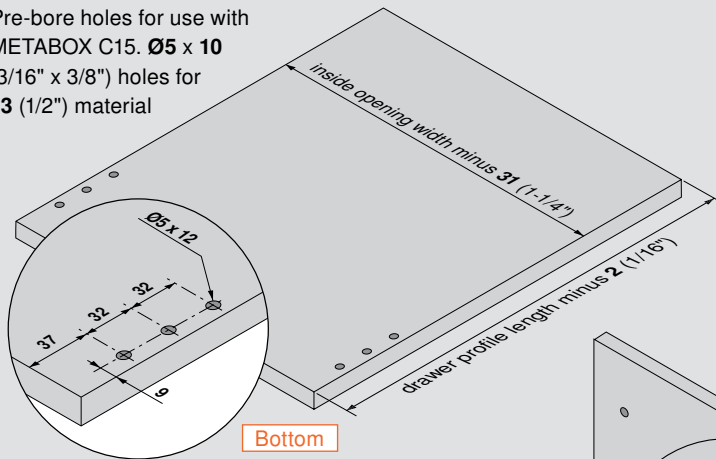


320H Drawer Series

METABOX

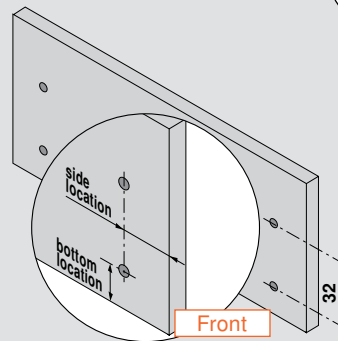
Specifications

Pre-bore holes for use with
METABOX C15. $\varnothing 5 \times 10$
(3/16" x 3/8") holes for
13 (1/2") material

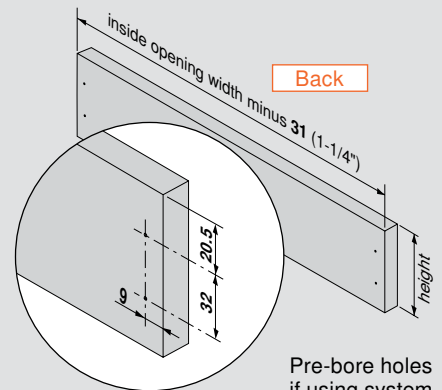


Bottom

Nominal length	Bottom length
550 (21-5/8")	548 (21-9/16")
500 (19-11/16")	498 (19-5/8")
450 (17-11/16")	448 (17-5/8")
400 (15-3/4")	398 (15-11/16")
350 (13-3/4")	348 (13-11/16")



Front



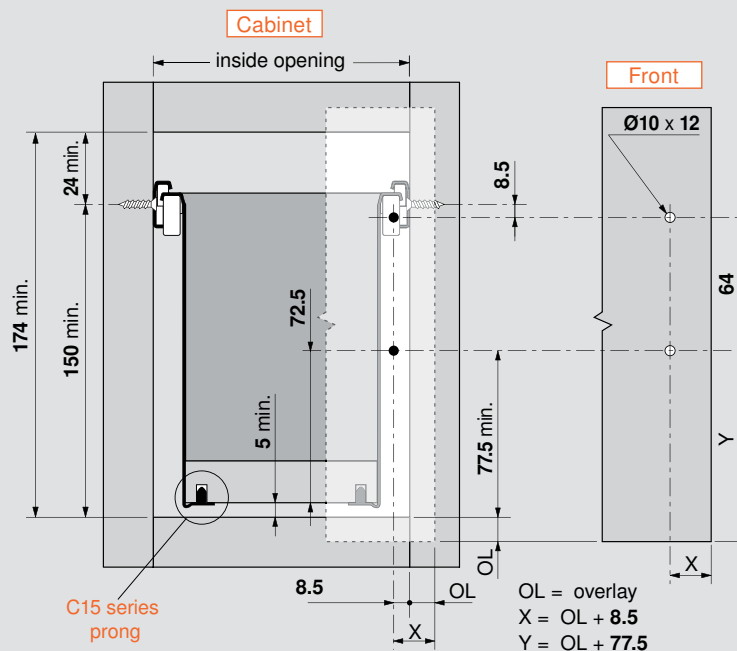
Back

Pre-bore holes
if using system
screws

Material thickness	Back height
13 (1/2")	138 (5-7/16")
16 (5/8")	135 (5-5/16")
19 (3/4")	132 (5-3/16")

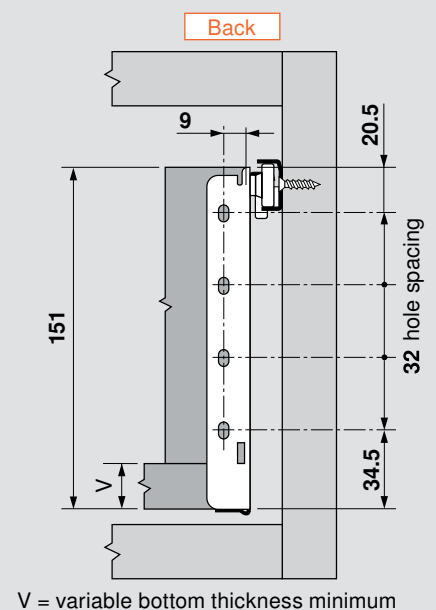
Bore $\varnothing 10 \times 12$ ($\varnothing 3/8" \times 1/2"$) hole for front fixing brackets with dowels
(Determine locations from specifications below, or see page 42 for pre-determined overlays)

Installation specifications



C15 series
prong

OL = overlay
X = OL + 8.5
Y = OL + 77.5



V = variable bottom thickness minimum

Rear bracket for frame cabinet applications

page 35

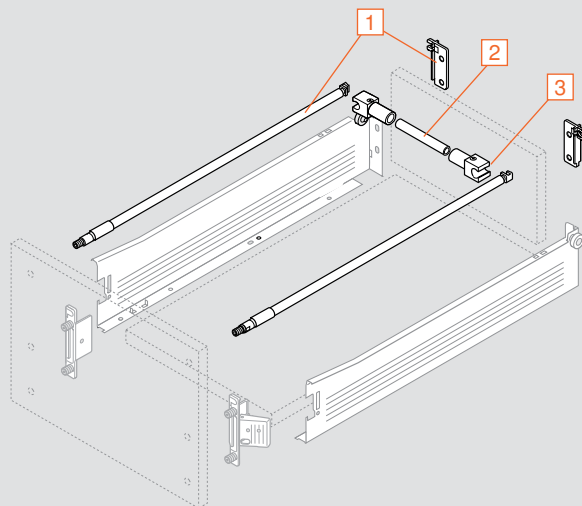
For gallery rail and BOXSIDE specifications

page 16

For interior drawer specifications

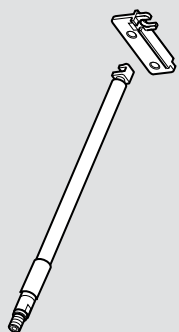
page 21

Gallery components



INSERTA gallery set

1



Set includes:

- Adjustable rails (qty 2)
- Rear fixing brackets (qty 2)
- Colors: white

Part no.

450 (18") drawer length **ZRE.421S.ID**

500 (20") drawer length **ZRE.471S.ID**

550 (22") drawer length **ZRE.521S.ID**

Gallery connector

3



- Two required per gallery cross rail application
- Colors: dust gray

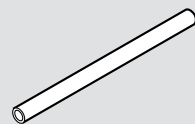
Part no.

Gallery connector

ZRU.00E0.01

Gallery cross rail

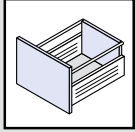
2



- 1104** (44") long, cut to length
- Colors: white
- Length = inside opening width minus **60** (2-3/8")

Part no.

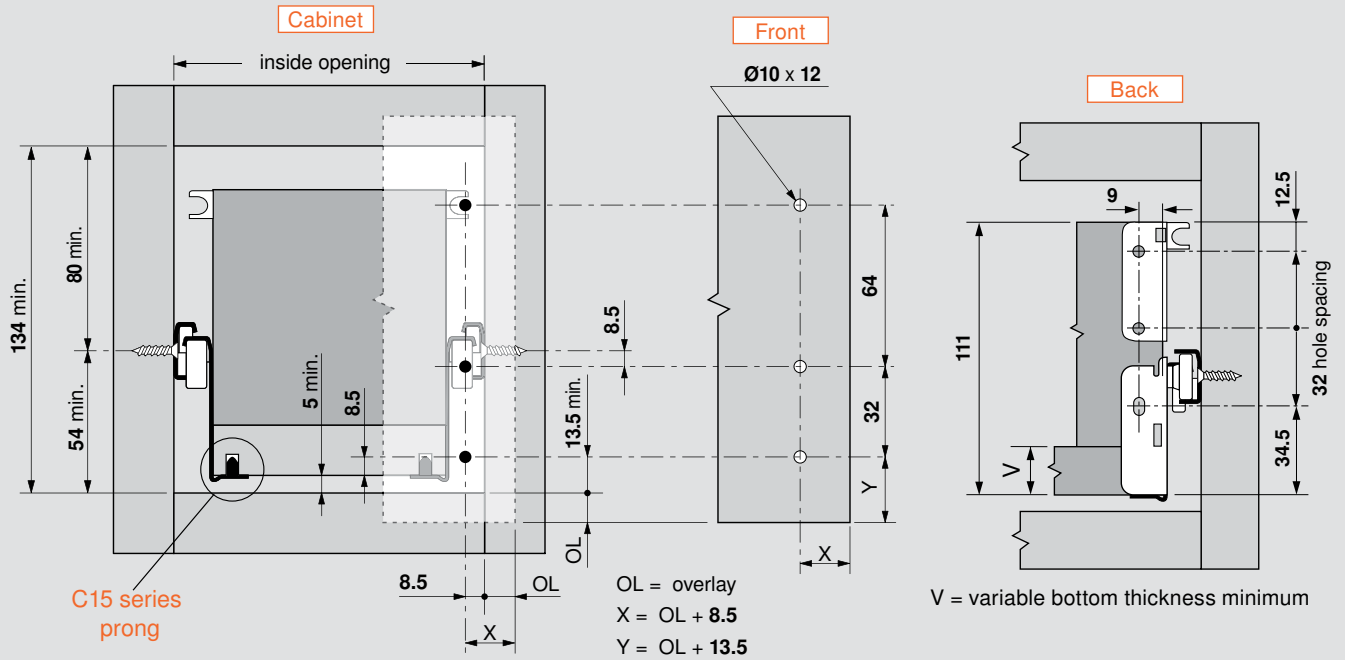
Gallery cross rail **ZRG.1104U**



Gallery Rail

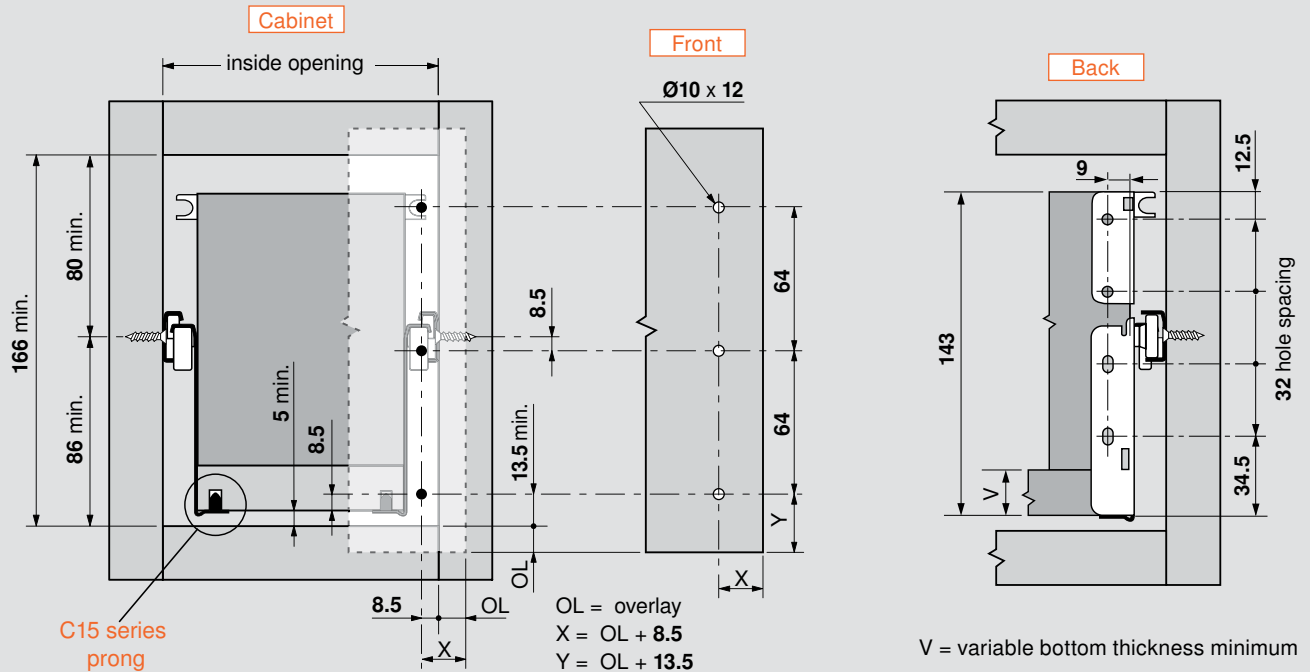
METABOX

320N installation specifications



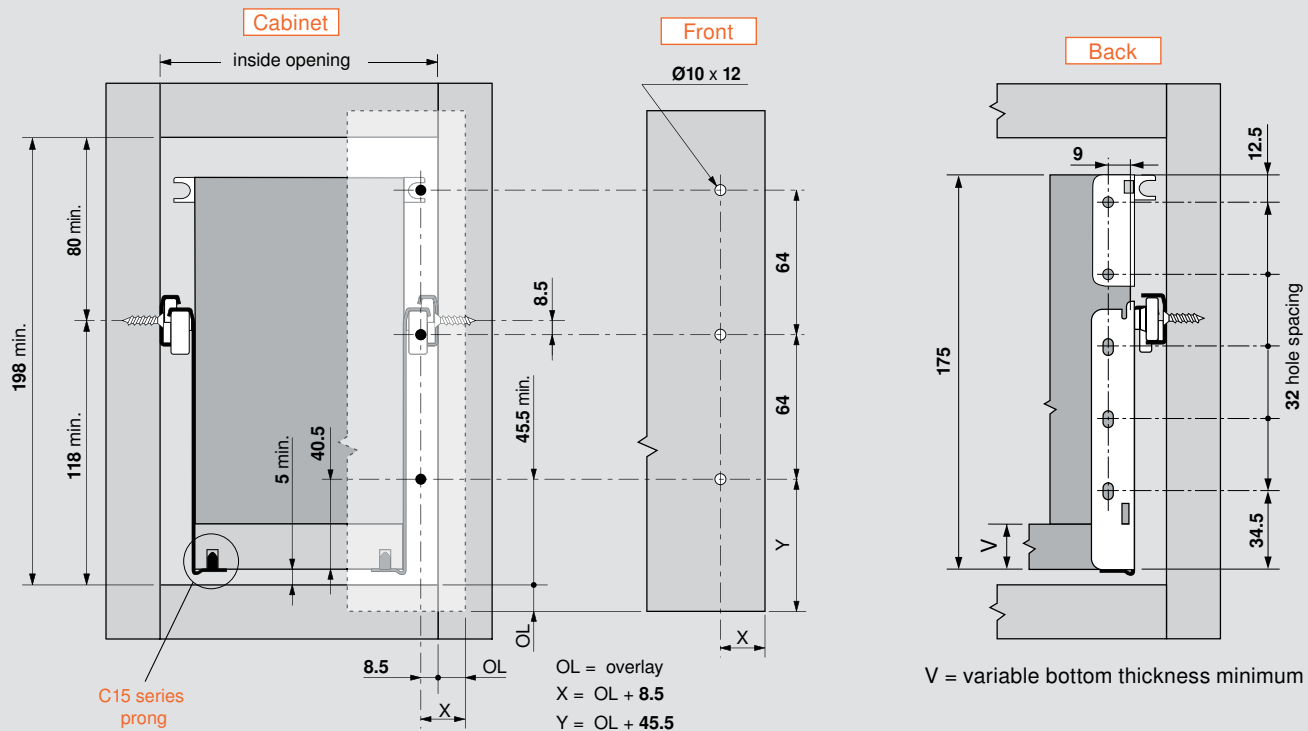
NOTE: For double gallery rail application add 64 (2-1/2") to opening and back height

320M installation specifications



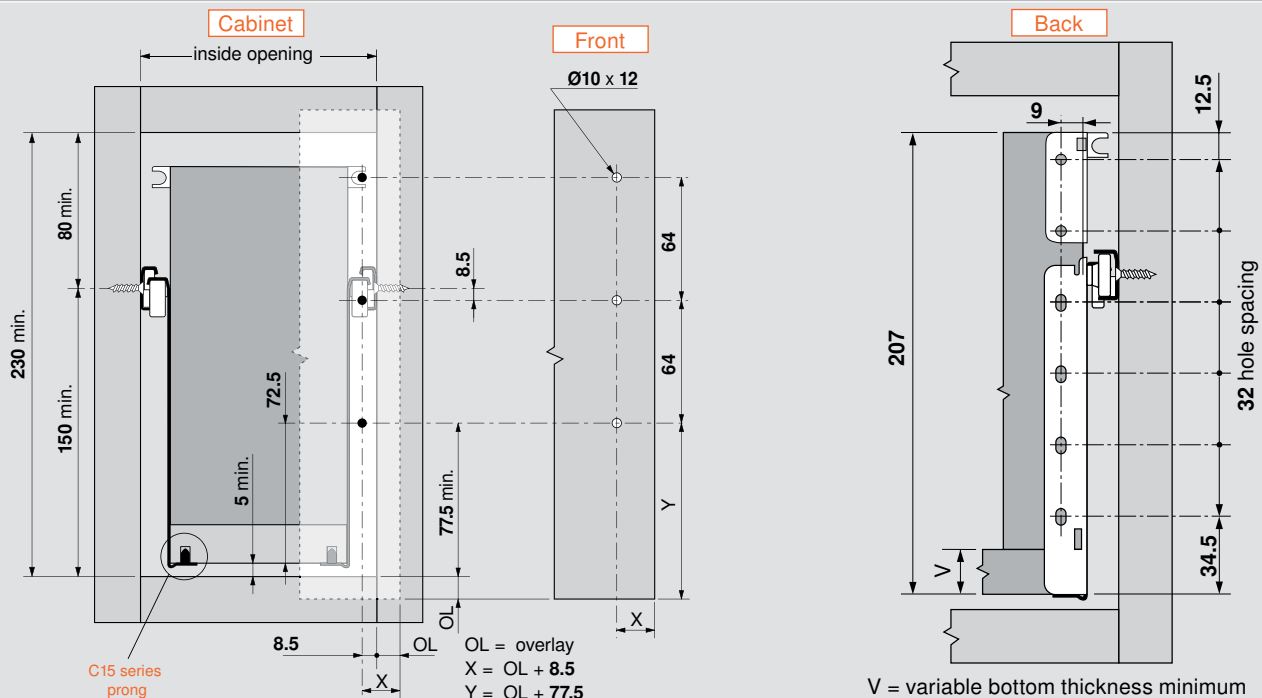
NOTE: For double gallery rail application add 64 (2-1/2") to opening and back height

320K installation specifications

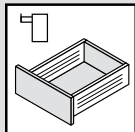


NOTE: For double gallery rail application add 64 (2-1/2") to opening and back height

320H installation specifications



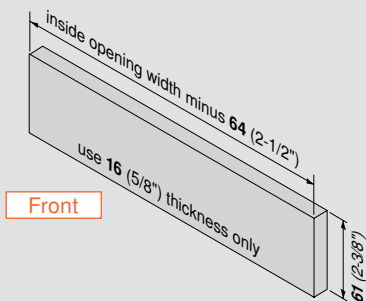
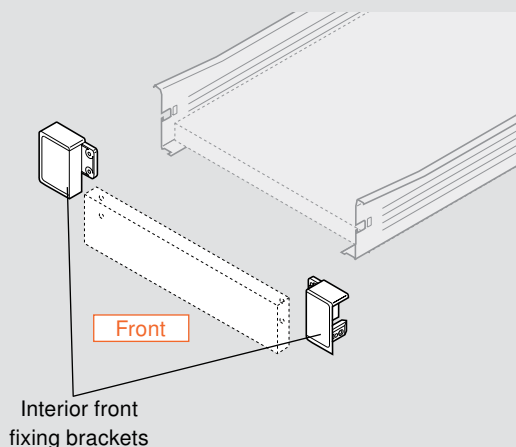
NOTE: For double gallery rail application add 64 (2-1/2") to opening and back height



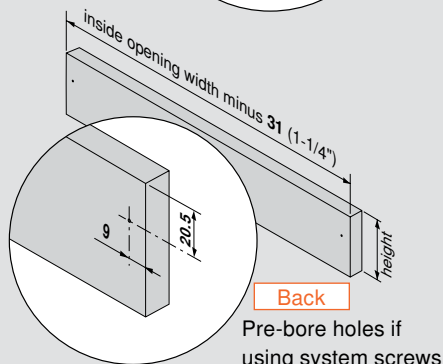
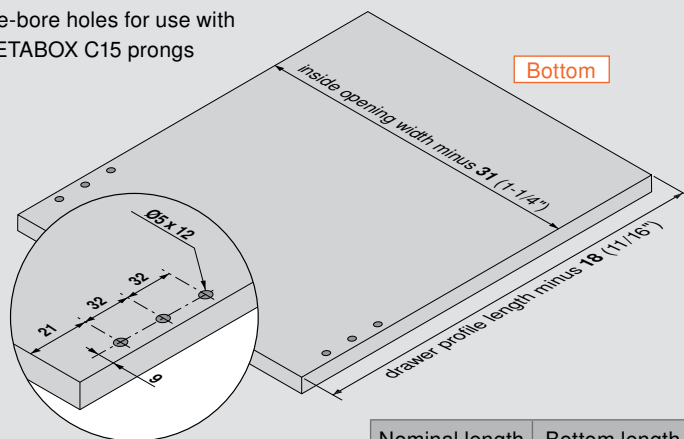
320N Interior Drawer Application

METABOX

Components



Pre-bore holes for use with METABOX C15 prongs

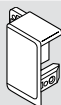


Nominal length	Bottom length
550 (21-5/8")	532 (20-15/16")
500 (19-11/16")	482 (19")
450 (17-11/16")	432 (17")
400 (15-3/4")	382 (15-1/16")
350 (13-3/4")	332 (13-1/16")
270 (10-5/8")	252 (9-15/16")

Bottom material thickness	Back height
13 (1/2")	42 (1-5/8")
16 (5/8")	39 (1-9/16")
19 (3/4")	36 (1-7/16")

Screw-on interior front fixing bracket

Nylon



White

Part no.

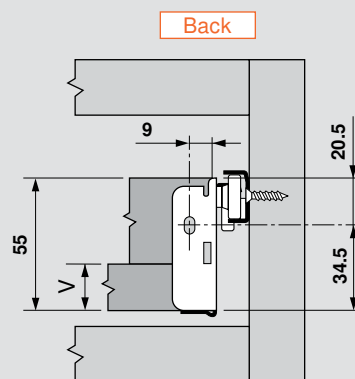
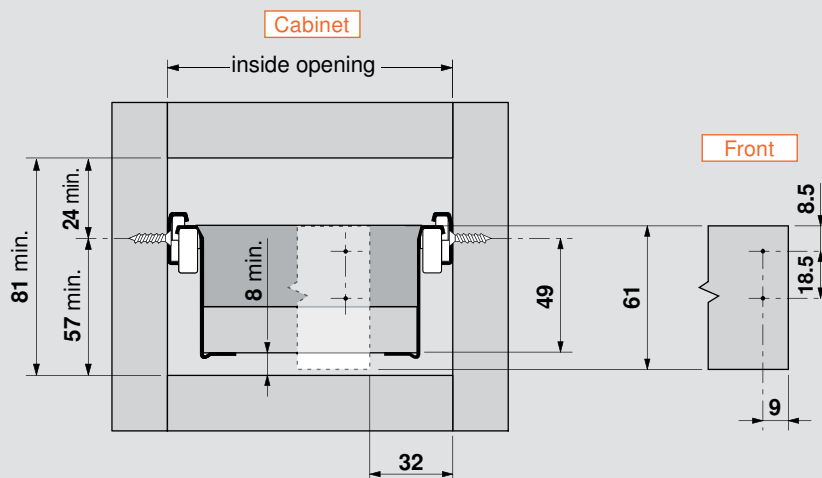
Right

ZIF.3010.02

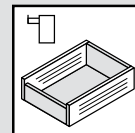
Left

ZIF.3010.03

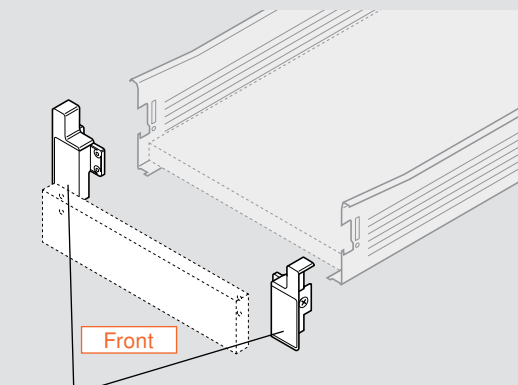
Installation specifications



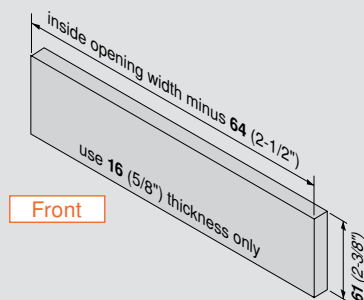
V = variable bottom thickness minimum



Components

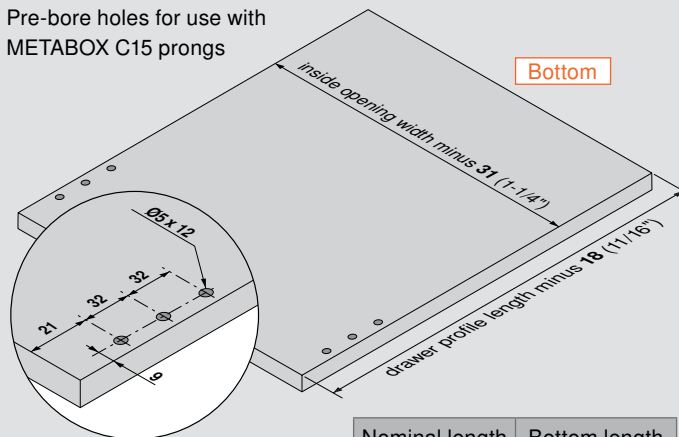


Interior front fixing brackets

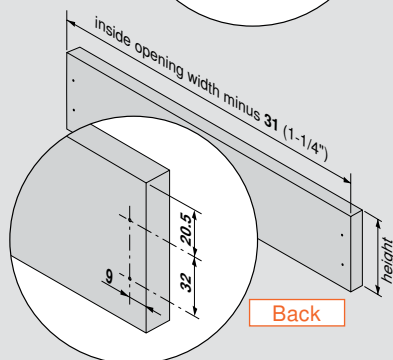


Front

Pre-bore holes for use with METABOX C15 prongs



Bottom



Back

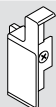
Pre-bore holes if using system screws

Nominal length	Bottom length
550 (21-5/8")	532 (20-15/16")
500 (19-11/16")	482 (19")
450 (17-11/16")	432 (17")
400 (15-3/4")	382 (15-1/16")
350 (13-3/4")	332 (13-1/16")
270 (10-5/8")	252 (9-15/16")

Bottom material thickness	Back height
13 (1/2")	74 (2-15/16")
16 (5/8")	71 (2-15/16")
19 (3/4")	68 (2-11/16")

Screw-on interior front fixing bracket

Nylon



White

Part no.

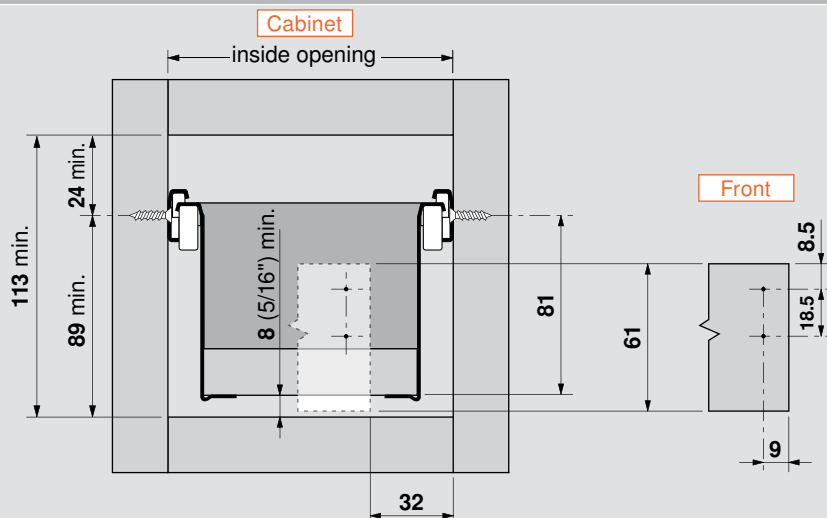
Right

ZIF.3000.02

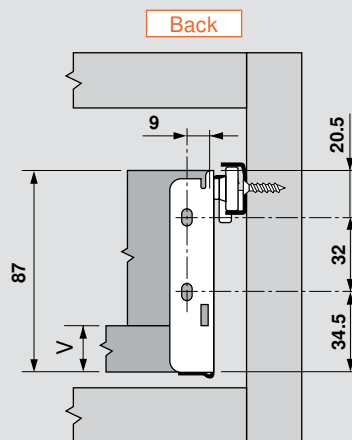
Left

ZIF.3000.03

Installation specifications

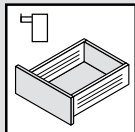


Front



Back

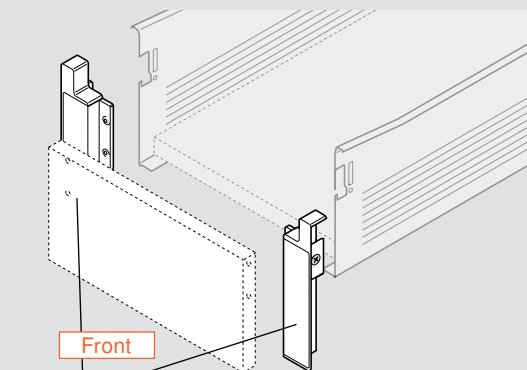
V = variable bottom thickness minimum



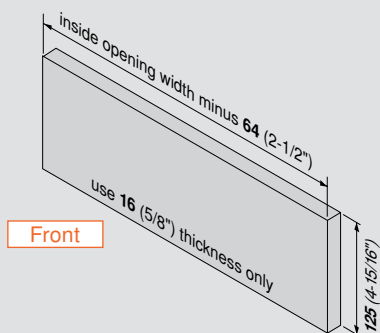
320H Interior Drawer Application

METABOX

Components

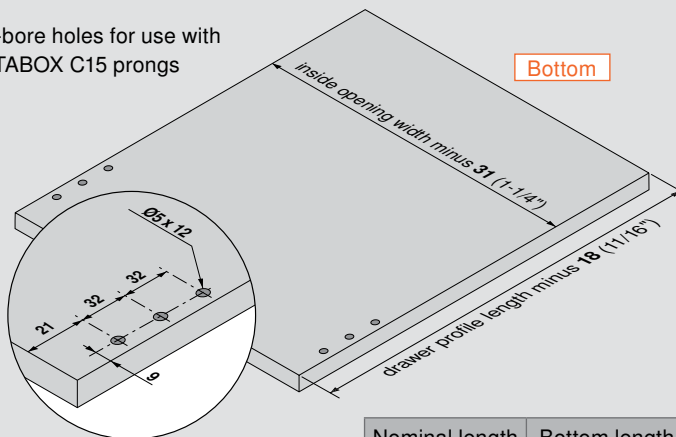


Interior front fixing brackets

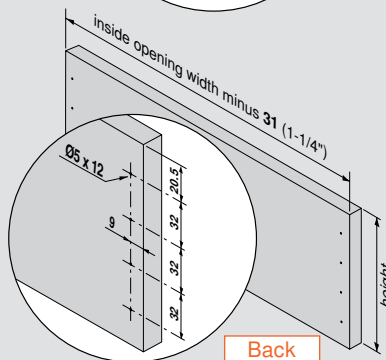


Front

Pre-bore holes for use with METABOX C15 prongs



Bottom



Back

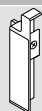
Pre-bore holes if using system screws

Nominal length	Bottom length
550 (21-5/8")	532 (5-7/16")
500 (19-11/16")	482 (19")
450 (17-11/16")	432 (17")
400 (15-3/4")	382 (15-1/16")
350 (13-3/4")	332 (13-1/16")

Bottom material thickness	Back height
13 (1/2")	138 (5-7/16")
16 (5/8")	135 (5-5/16")
19 (3/4")	132 (5-3/16")

Screw-on interior front fixing bracket

Nylon



White

Part no.

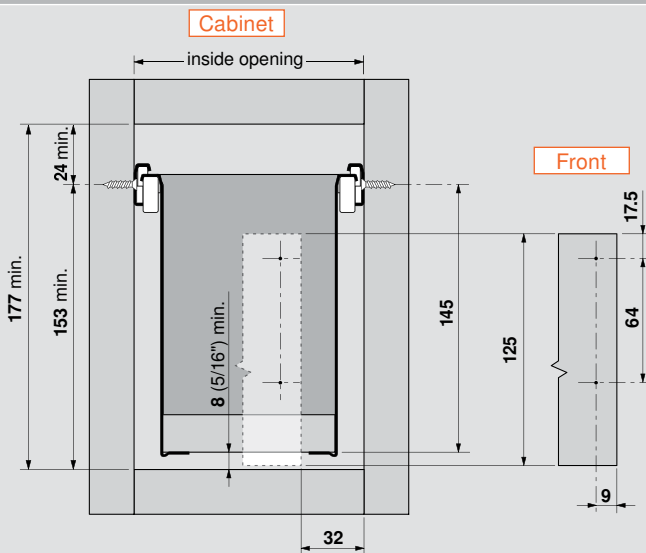
Right

ZIF.3050 R

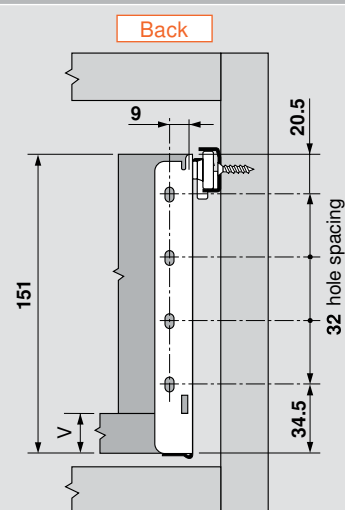
Left

ZIF.3050 L

Installation specifications



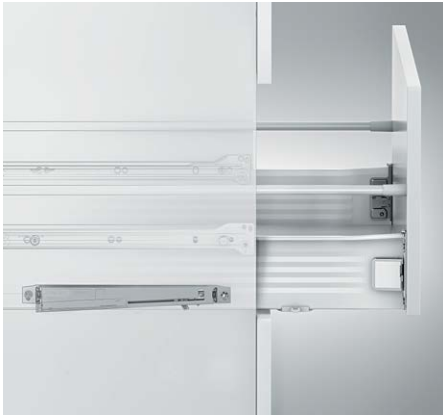
Front



Back

V = variable bottom thickness minimum

Application



Features

- Soft closing mechanism for METABOX 320 series
- Designed for single extension C15 only
- Minimal opening force required
- One BLUMOTION required for cabinets up to 36" wide
- BLUMATIC self-closing and BLUMOTION in one mechanism

Required parts

BLUMOTION for METABOX set

Set includes:

- Gray mechanism
- White latch



Part no.

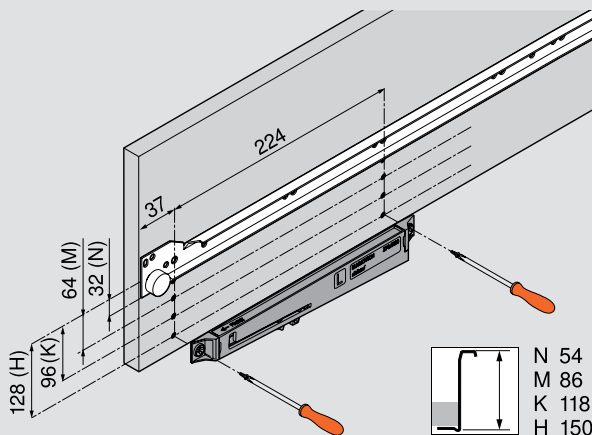
BLUMOTION set

Z70.0320

Installation

BLUMOTION mechanism mounting

Only one BLUMOTION set required for cabinets up to 36" wide



Installation screws

Part no.

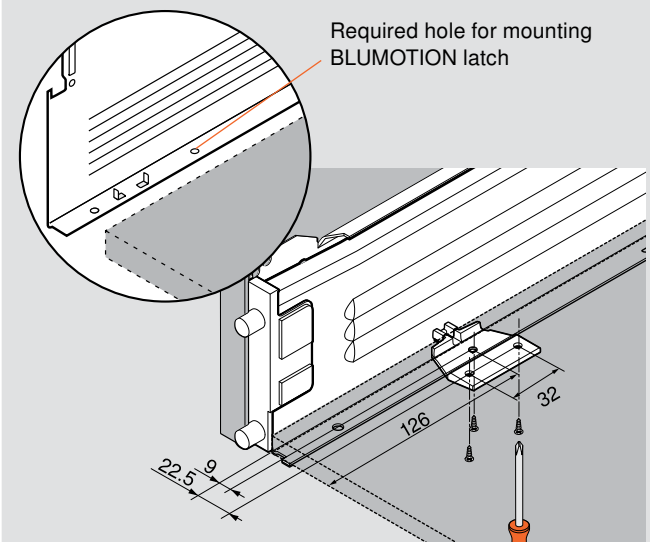
#6 x 5/8", #2 wood screw (two required)

606N or 606P

#7 x 14.5 mm system screw (two required)

661.1450HG

Latch attachment



Installation screws

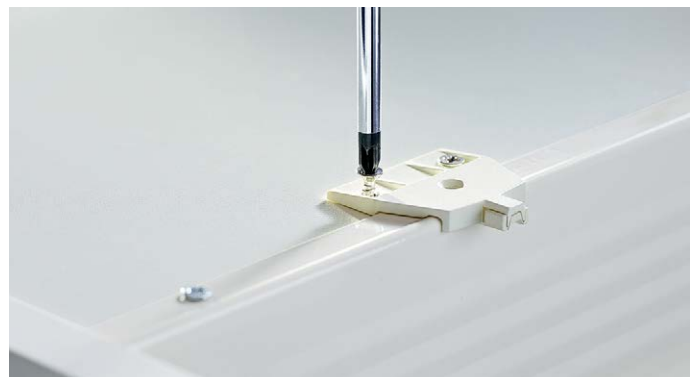
Part no.

#6 x 5/8", #2 wood screw (two required)

606N or 606P



BLUMOTION for METABOX attaches on the left side of the cabinet, below the cabinet profile.



Two screws in the bottom and one in the drawer profile are required.

Dimensions

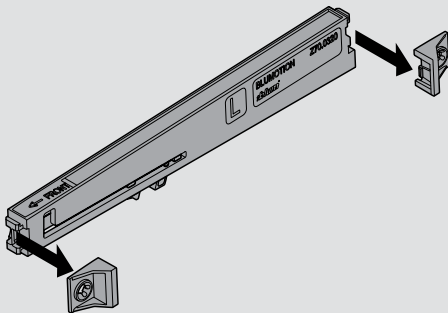
Increased space beneath the drawer required

N height drawer	M height drawer	K height drawer	H height drawer

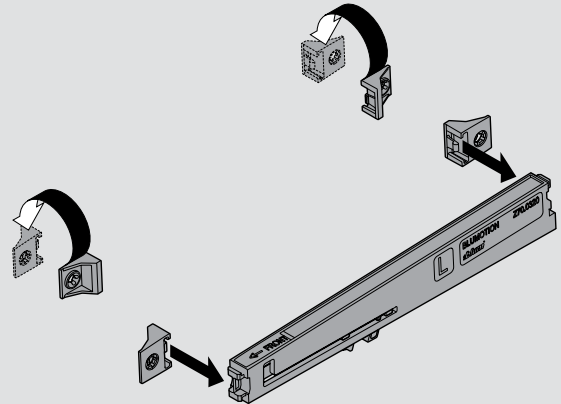
For drawers greater than 36" wide

Use two BLUMOTION for METABOX sets

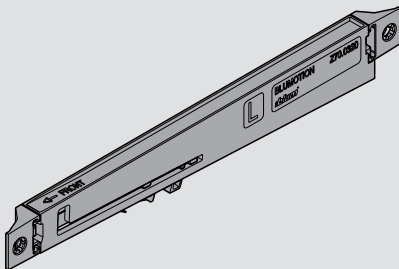
- After attaching the left mechanism, prepare the second BLUMOTION for attachment to the right side by removing the end brackets



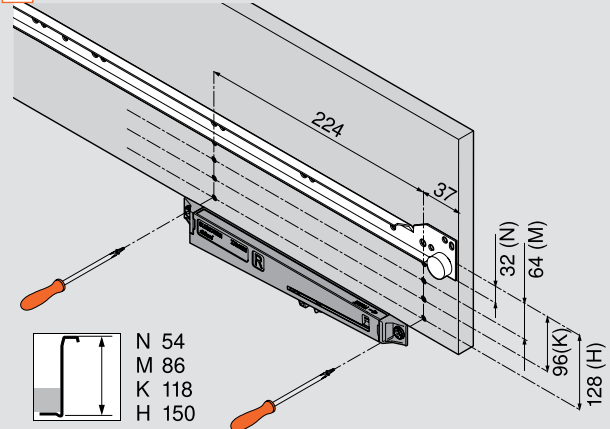
- Rotate end brackets 180° and re-attach



- The BLUMOTION mechanism is now ready for attachment to the right side of the cabinet



- Attach with the installation screws shown



Installation screws

Part no.

#6 x 5/8", #2 wood screw (two required)

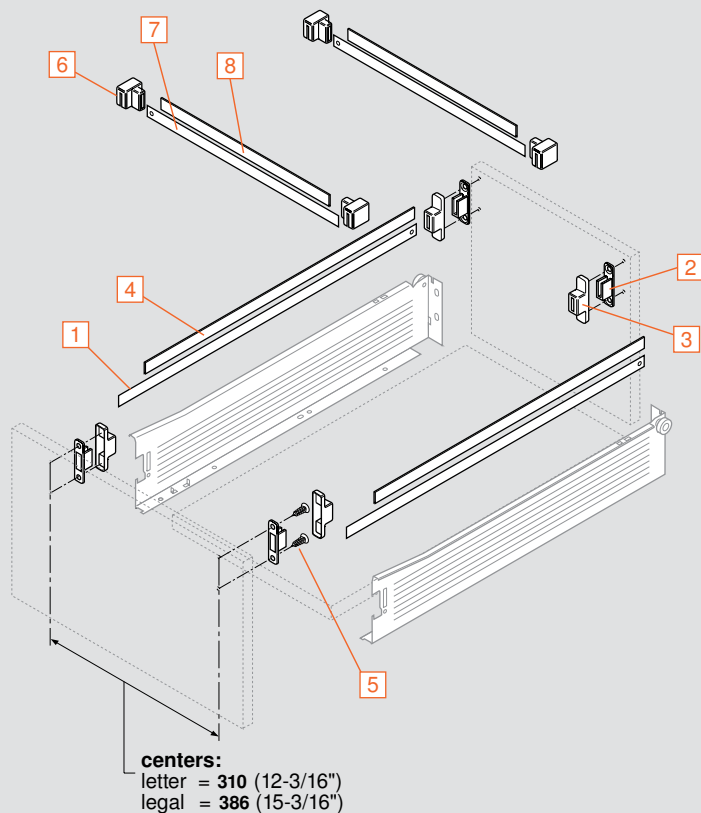
606N or 606P

#7 x 14.5 mm system screw (two required)

661.1450HG

NOTE: An additional latch is required on the right side of the drawer

METAFILE set



Includes components to make one standard hanging file system

Set includes:

- 1** Steel hanging rails (ZRM.550S) zinc coated, 3 x 13 x 550 (qty 2)
- 2** Rail support brackets (ZRM.0005) synthetic, natural color (qty 4)
- 3** Rail support covers (ZRM.0003) synthetic, white (qty 4)
- 4** Glide profiles (ZRM.550G) synthetic, white, 550 length (qty 2)
- 5** Flathead wood screws (6064N) nickel, #6 x 3/4" (qty 8)

Part no

METAFILE set

ZRM.5500.US

Lateral file accessories

- 6** Lateral bracket synthetic, white

Four required per drawer

ZRM.0004.10

- 7** Steel hanging rail zinc coated, 3 x 13 x 1100 cut to length

Hanging rail

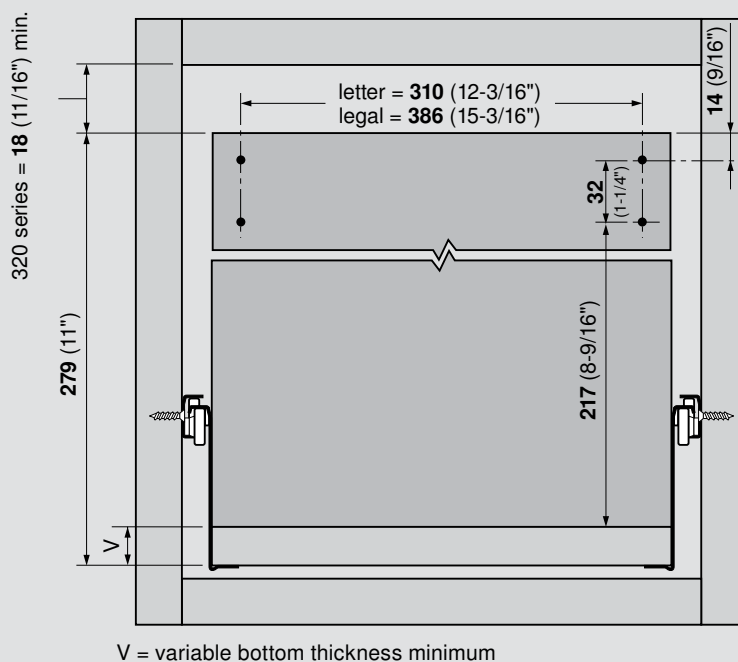
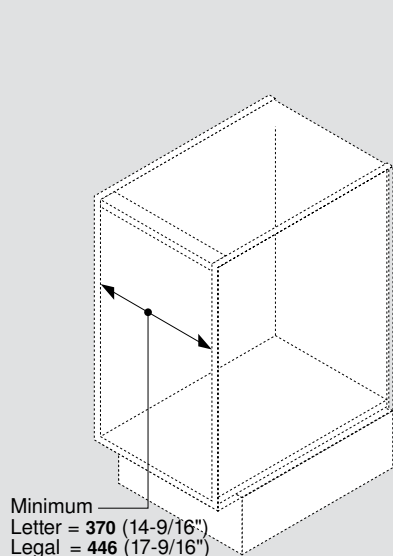
ZRM.1100S

- 8** Glide profile synthetic, white, 1100 mm long, cut to length

Glide profile

ZRM.1100G

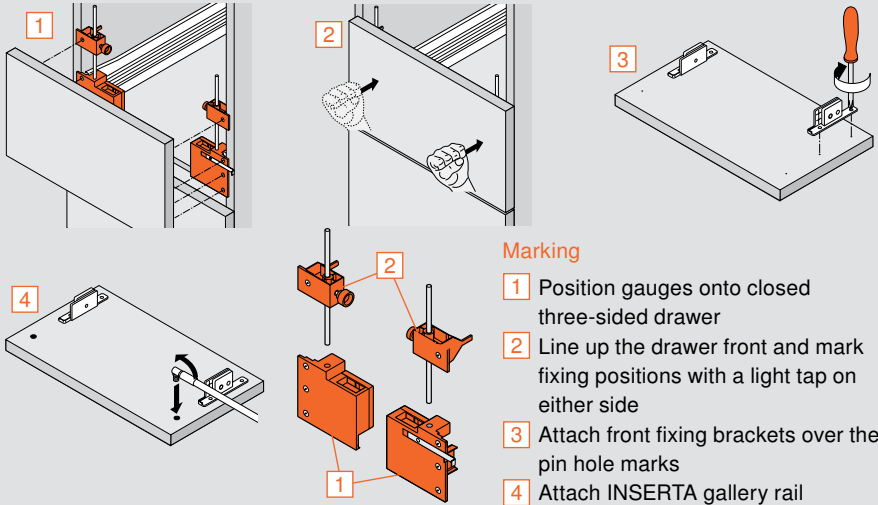
Assembly and installation specifications







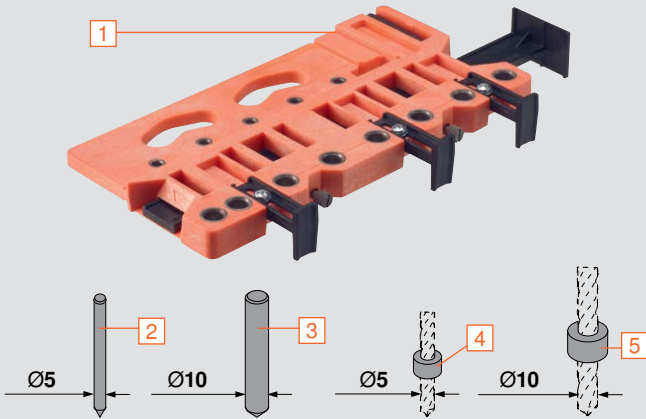
Drawer front marking gauges



For marking all front fixing bracket positions including drawers with galleries.

Standard marking gauge set	Part no.
For METABOX 320N, K, H	ZML.1500
For METABOX 320N	ZML.1510
Gallery marking gauge set (qty 2)	
— Rod with adjustable marking gauges	
Gauge set	ZML.8000.02

Universal boring template



Set includes:

- Used for boring drawer fronts, located all fixing positions
- Used to pre-bore for drawer fronts, bottoms and backs for LEGRABOX, TANDEMBOX and METABOX drawer systems, also AVENTOS mounting plates

	Part no.
Universal boring template	ZML.0040.01
Ø5 drill bit	DB-5mm
Ø10 drill bit	DB-10mm

Cabinet profile template

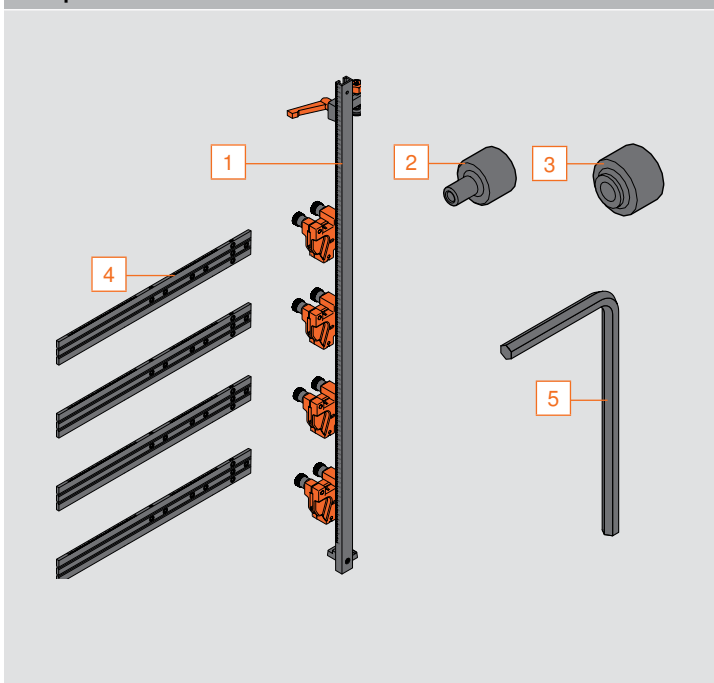


- Used for pre-boring holes for LEGRABOX, TANDEMBOX, and TANDEM drawer runners
- Can also be used to pre-bore AVENTOS locating pins and pre-boring for hinge mounting plates

Part no.

Cabinet profile template	65.1000.01
Replacement template	65.1001.01
Ø2.5 drill bit	DB-2.5mm

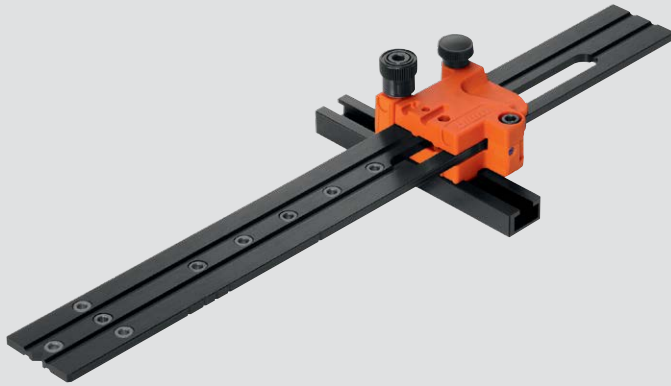
Components



Cabinet profile template includes:

- 1 Rail, 1 meter long (qty 1)
- 2 Ø2.5 stop collar (qty 1)
- 3 Ø5 stop collar (qty 1)
- 4 Replacement template (qty 4)
- 5 Allen wrench (qty 1)

Universal individual template



- Used for pre-boring holes for LEGRABOX, TANDEMBOX, and TANDEM drawer runners
- Can also be used to pre-bore for AVENTOS locating pins and pre-boring for hinge mounting plates
- Calibrated scales for accurate setting

Set includes:

- Universal individual template
- Ø2.5 and Ø5 stop collars

Part no.

Universal individual template

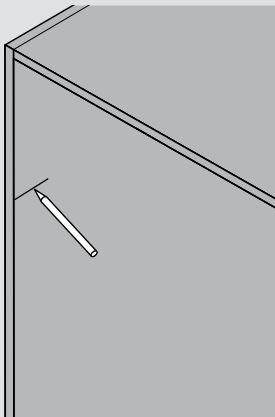
65.1051.02

Ø2.5 drill bit

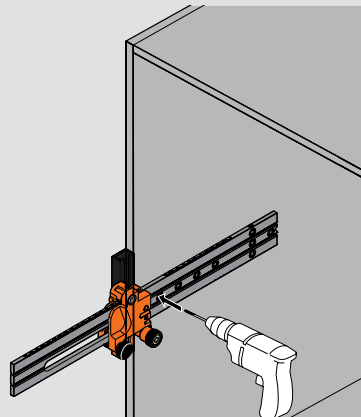
DB-2.5mm

Pre-boring for cabinet profile mounting holes

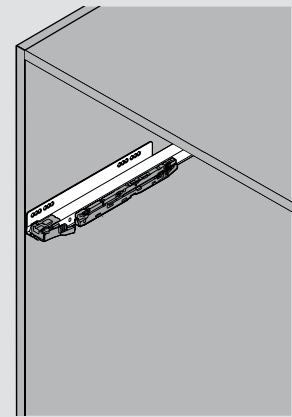
1 Mark position



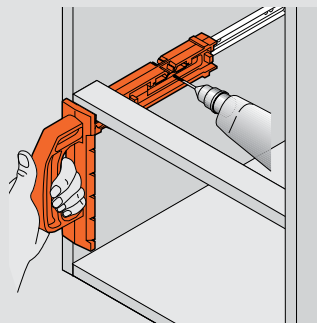
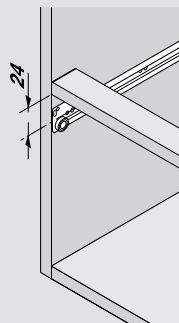
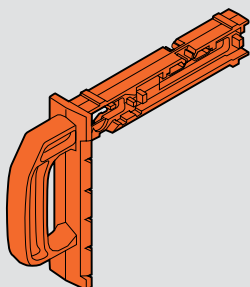
2 Line up template with mark and pre-bore required holes



3 Attach runner



MINIFIX



For precise positioning of cabinet profile fixing screws.

- For METABOX series 320N, M, K, H
- For runners 230M

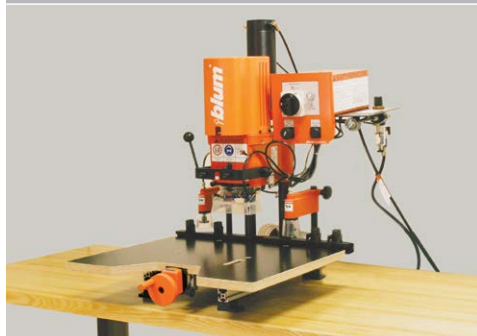
Part no.

MINIFIX

65.3300

Machines

MINIPRESS P — Deluxe boring and insertion machine



- Front adjustable boring distance with digital counter
- Pneumatic hold-down clamps
- Boring depth adjustment
- Ruler stops (qty 4)
- Tool kit included
- Dust collection attachment
- Optional laser center line set
- Accepts new 8 or 9 spindle heads

Part no.

Single phase — 220V power

M53.1053*US

Three-phase — 220V power

M53.1004*US

MINIPRESS M — 110V manual boring and insertion machine



- 110V power with molding plug (portable)
- Does not require pressurized air
- Ruler stops (qty 4)
- Tool kit included
- Dust collection attachment
- Accepts 8 or 9 spindle heads

Part no.

Single phase — 110V power

M52.1056*US

EASYSTICK



* Maximum position 953mm from center

** 1700 each side

- Automatically moves stops for exact drilling locations for all Blum products
- Built-in cabinet configurator for cabinet design with integrated Blum hardware
- Available as upgrade for MINIPRESS P (models 2007 and newer)

Part no.

Computer

MZD.5000

Fence - overall 1700mm*

MZD.2000

Fence extensions - additional 1700**

MZD.2V00

Support for extension ruler

M2V.2E00

Optional items



Part no.

Laser center line set

MZR.5300.US

8 spindle head



- 8 spindle head for use with MINIPRESS/MINIDRILL M53
- Bores eight holes spaced **32** apart, perpendicular to the fence
- Quick-disconnect chucks
- Once aligned, does not require additional adjustment
- Bores all METABOX/TANDEMBOX/LEGRABOX front fixing brackets and galleries
- Bores cabinet side panels for all Blum runner systems
- Requires retrofit set for use with machines produced in 2009 or prior

Includes:

- Ø3 allen wrench
- Distance spacer
- Drive pin
- Air hose

Part no.

8 spindle head	MZK.880S
Chuck cover cap	M30.1329

9 spindle head



- 9 spindle head for use with MINIPRESS/MINIDRILL M53
- Bores nine holes spaced **32** apart, parallel to the fence
- Quick-disconnect chucks
- Once aligned, does not require additional adjustment
- Bores cabinet side panel for **32** millimeter system boring for Blum mounting plates and runners
- Requires retrofit set for use with machines produced in 2009 or prior

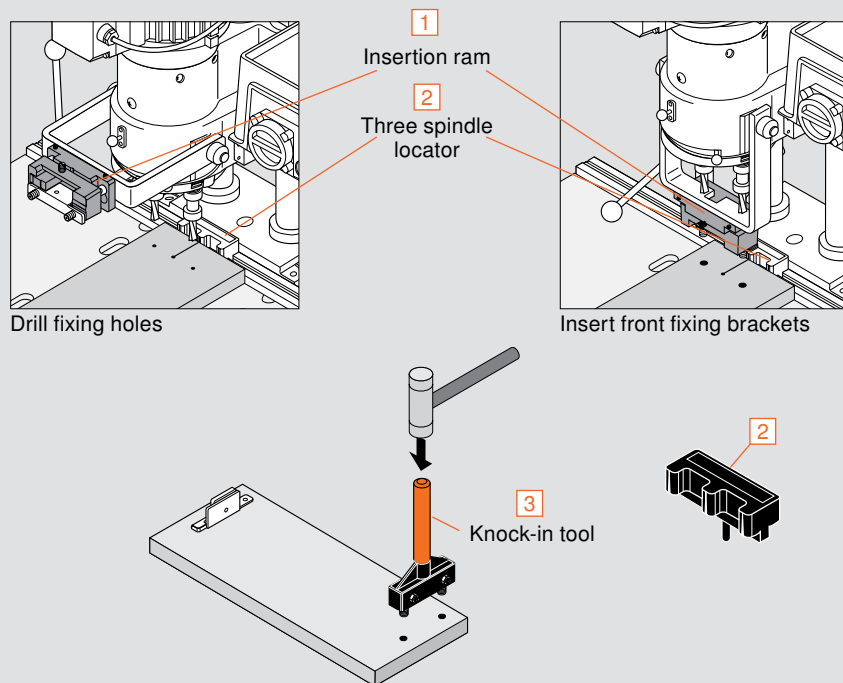
Includes:

- Ø3 allen wrench
- Distance spacer
- Drive pin
- Air hose

Part no.

9 spindle head	MZK.190S
Chuck cover cap	M30.1329

Installation tools

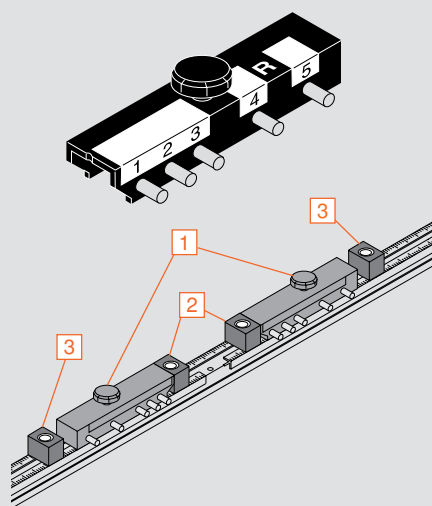


For location and insertion of front fixing brackets.

Three spindle locator enables the positioning of the drawer front without using fence stops (not for use with hinge insertion).

Part no.	
1 Insertion ram for MINIPRESS	
ZSF.1300 and ZSF.1800	MZM.0092.01
2 Three spindle locator	MZR.2000
3 Knock-in tool	
ZSF.1300 and ZSF.1800	ZME.1600.01
3 Knock-in tool	
ZSF.1610	ZME.1610

MINISTICK fence stop



Enables fast setup for drawer front boring and front fixing bracket insertion with the MINIPRESS.

Eliminates the need for multiple fence stops.

Set includes:

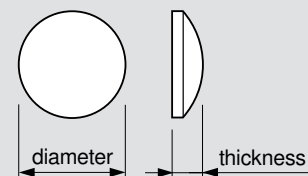
- 1 LH & RH adj. stick mechanism
- 2 Upper drawer stop (qty 2)
- 3 Bottom drawer stop (qty 2)

NOTE: Essential tool for production boring of drawer fronts

Part no.	
MINISTICK	MZS.0040

Bumpers

- Cushions door closing
- Clear with a self-adhesive back

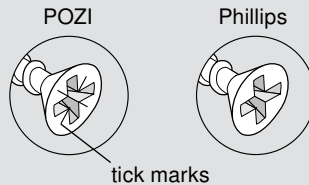


Part no.	
Ø6 (1/4") x 1.5 (1/16")	FX4041
Ø10 (3/8") x 3 (1/8")	SJ5312

POZI DRIVER and bits



A POZI screwdriver (different from Phillips) is the most crucial tool you can use to assure that full torque is applied to all Blum mounting screws. POZI screws can be identified by the distinctive "tick" marks located in the center of the screw head recess.

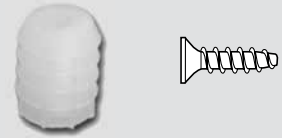


Part no.

#2 POZI DRIVER	POZI DRIVER
1/4" Magnetic bit holder	BIT HOLDER
#2 x 1" POZI bit insert	POZI BIT #2x1
#2 x 2" POZI bit insert	POZI BIT #2x2

Replacement dowel and screw

Replacement dowel and screw for the front fixing brackets.

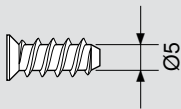


Part no.

Ø10 mm dowel	80.3532
Dowel screw	608.1200

Deep thread system screw

Pilot bore Ø5 (3/16") hole



Part no.

#7 x 11.5 mm, #2 POZI	661.1150.HG
#7 x 13 mm, #2 POZI	661.1300.HG
#7 x 14.5 mm, #2 POZI	661.1450.HG
#6 x 11.5 mm, Special	662.1150.HG

Deep thread wood screw

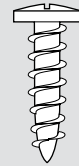


Part no.

#6 x 5/8", #2 Phillips	606N
#6 x 5/8", #2 POZI	606P
#6 x 3/4", #2 Phillips	6064N
#7 x 5/8", #2 Phillips	707N
#7 x 3/4", #2 Phillips	7074N

Truss head wood screw

Pilot bore Ø2 (3/32") hole



Part no.

#6 x 1/2", #2 Phillips	612TH
------------------------	--------------

Ø10 Drill bit



- Ø10 (13/32") drill bit for the MINIPRESS boring heads

Part no.

Drill bit (right hand)	M01.ZB10.02
Drill bit (left hand)	M01.ZB10.03

Ø5 Drill bit



- Ø5 (3/16") drill bit for the MINIPRESS boring heads

Part no.

Drill bit (right hand)	M01.ZB05.D2
Drill bit (left hand)	M01.ZB05.D3

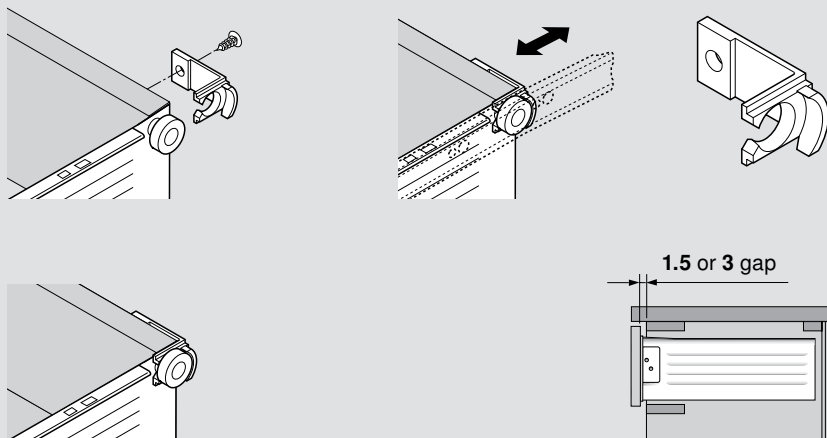
Countersink drill bit



- Ø10 (13/32") drill bit for the MINIPRESS boring heads
- For HPL material

Ø10 mm drill bit (LH)	T108-10mmL
-----------------------	-------------------

POSI-STOP assembly



Add-on device to keep drawer front from contacting the cabinet face.

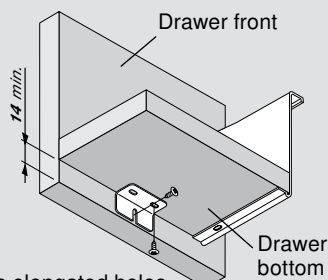
- Available in thicknesses of **1.5** (1/16") or **3** (1/8")
- Synthetic, natural finish
- Non-handed
- Use two per drawer
- Snap in place and secure with wood screw

Part no.

1.5 (1/16") gap	298.3210.01
3 (1/8") gap	298.3230.01
Installation screws	606N or 606P

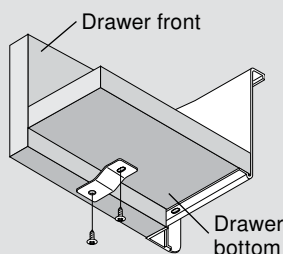
Drawer front support brackets

Standard drawers



NOTE: Has elongated holes

Interior pull-out trays



Add-on brackets for wide drawers to keep the front tight to the drawer bottom.

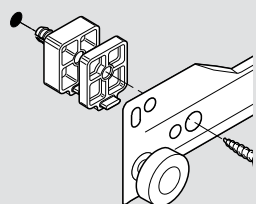
- Stainless steel
- Attach with 612TH screws
- #6 x 1/2" trusshead

Part no.

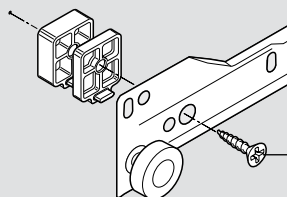
For standard drawers	ZSB.0090.01
For interior roll-out trays	ZSB.0045.01
Installation screw	612TH

Cabinet profile spacers

With split dowel



Without split dowel



Use #6 FH screw that penetrates cabinet side at least **13**

NOTE: Use spacers on front, middle and rear of each cabinet profile for adequate support

To space runners away from the cabinet side to clear door protrusion for interior roll-out trays.

- Two thicknesses available that can be stacked up to **24** (15/16")
- Synthetic, cream color

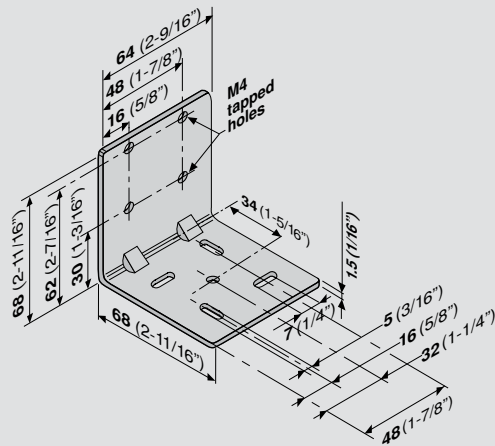
1 **8** (5/16") with **Ø5** (3/16") x **11** dowel for linebore mounting

Part no.

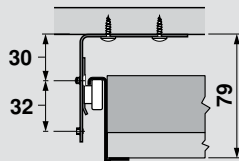
	320M0188
2 4 (5/32") stackable	320M0048

Installation screw	606N or 606P
--------------------	---------------------

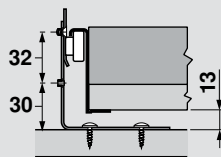
Universal drawer bracket set



METABOX top mount (320N shown)



Bottom mount (320N only)



For mounting Blum runners to the underside of a counter surface (pencil drawer) or to the floor of a cabinet (roll-out tray).

- Zinc-coated steel
- Attach to cabinet with Blum 612TH screws, #6 x 1/2" truss head

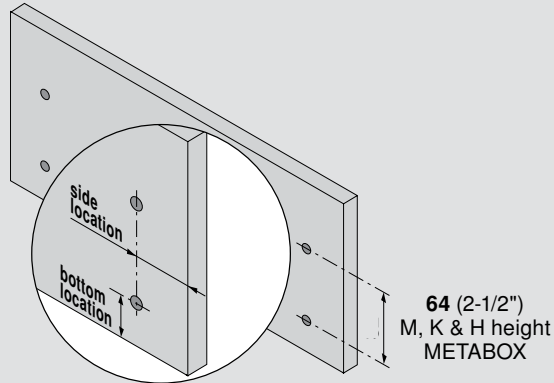
Set includes:

- Universal brackets (qty 4)
- M4 x 6 flathead machine screws to attach runners to brackets (qty 8)

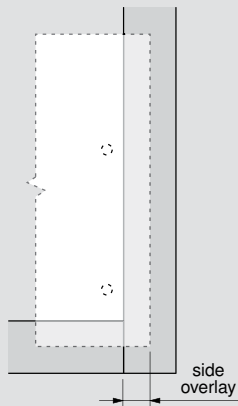
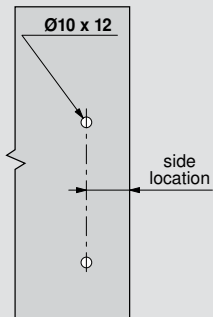
Part no.

Drawer bracket set	295.4000
Installation screw	612TH

Determining front fixing bracket locations



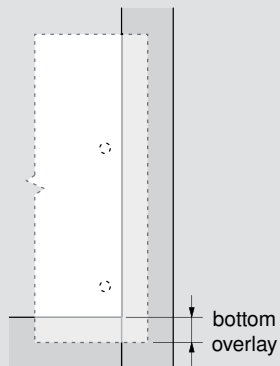
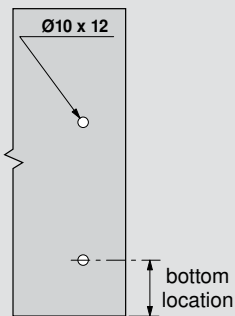
Side location



Side overlay	Side location
13	21.5
14	22.5
16	24.5
17.5	26
19	27.5

NOTE: For overlays not shown please refer to specification pages 6-19 to calculate hole locations

Bottom location



Bottom overlay	Bottom location		
	N and M	K	H
13	26.5	58.5	90.5
14	27.5	59.5	91.5
16	29.5	61.5	93.5
17.5	31	63	95
19	32.5	64.5	96.5

NOTE: For overlays not shown please refer to specification pages 6-19 to calculate hole locations



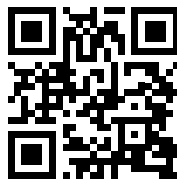
Part no.	Page no.		
602750	27	M53.1053*US	30
65.3300	29	MZD.2000	30
65.100.01	28	MZD.2V00	30
65.1001.01	28	MZD.5000	30
65.1051.02	29	MZV.2E00	30
80.3532	33	MZK.190S	31
295.4000	33	MZK.8800S	31
298.3210.01	32	MZM.0092.01	34
298.3230.01	32	MZR.2000	32
320H3500C15	14	MZR.5300.US	30
320H4000C15	14	MZS.0040	32
320H4500C15	14	POZI BIT #2X1	33
320H5000C15	14	POZI BIT #2X2	33
320H5500C15	14	POZI DRIVER	33
320K3500C15	12	SJ5312	32
320K4000C15	12	T108-10mmL	35
320K4500C15	12	Z70.0320	22
320K5000C15	12	ZAA.3500	10, 12, 14,
320K5500C15	12	ZIF.3000.02	20
320M0048	32	ZIF.3000.03	20
320M0088	32	ZIF.3010.02	19
320M0188	32	ZIF.3010.03	19
320M2700C15	10	ZIF.3050	21
320M3500C15	10	ZME.1600.01	32
320M4000C15	10	ZME.1610	32
320M4500C15	10	ZML.0040	27
320M5000C15	10	ZML.1500	27
320M5500C15	10	ZML.1510	27
320N3500C15	8	ZML.8000.02	27
320N4000C15	8	ZRE.421S.ID	16
320N4500C15	8	ZRE.471S.ID	16
320N5000C15	8	ZRE.521S.ID	16
320N5500C15	8	ZRG.1104U	16
606N or 606P	33	ZRM.0004.10	24
6064N	33	ZRM.1100G	24
608.1200	33	ZRM.1100S	24
612TH	33	ZRM.5500.US	24
661.1150.HG	33	ZSB.0045.01	27
661.1300.HG	33	ZSB.0090.01	27
661.1450.HG	33	ZSF.130E	10, 12, 14
662.1150.HG	33	ZSF.1200	10, 12, 14
707N	33	ZSF.1300	10, 12, 14
7074N	33	ZSF.1510.04	8
BIT HOLDER	33	ZSF.1510.05	8
DB-2.5mm	28, 29	ZSF.1610.04	8
DB-5mm	29	ZSF.1610.05	8
DB-10mm	29	ZSF.1700	10, 12, 14
FX4041	32	ZSF.1800	10, 12, 14
M01.ZB05.D2	33		
M01.ZB05.D3	33		
M01.ZB10.02	33		
M01.ZB10.03	33		
M30.1329	31		
M52.1056*US	30		
M53.1004*US	30		



Why Choose Blum



The Blum name stands for quality, innovation and great customer service. We manufacture hardware that makes working in the kitchen easier, no matter the age of the user, and we do this globally. We've been in the United States for more than 40 years, and we are committed to manufacturing for the American market. Blum supports the United States market with a network of distributors, knowledgeable Blum sales representatives and an experienced customer service department. Each of our products has been designed carefully, with the customer experience in mind. We have a deep commitment to research and believe anyone who manufactures, sells, installs or uses our products should benefit from our knowledge and experience. We specialize in engineering and manufacturing concealed hinges, drawer systems and systems for lift-up doors. From our touch-to-open technology, to the soft-closing door or drawer, our hardware helps modernize the kitchen experience.



To learn more about Blum, visit blum.com/tour



Blum, Inc. is ISO 9001 certified which means that you are assured of consistent quality in every Blum product. They exceed the requirements of ANSI/BHMA standards for cycle life, static load and self-closing performance.





Blum, Inc.
7733 Old Plank Rd.
Stanley, NC 28164
800-438-6788
blum.com



Please visit blum.com for information on other Blum products.
LIT-MBX1000.03.23 ©2023 Blum, Inc. Printed in USA